



WALLIN
EDUCATION PARTNERS

— Class of —
2023

4
Year



WELCOME CLASS OF 2023!

Congratulations 2023 Wallin Education Partners Scholars!

We are pleased to welcome you to Wallin as one of over 545 students who were awarded a scholarship this year. Take pride in your accomplishments and embrace all that you are about to experience. Remember to thank your family, friends, teachers, counselors, and mentors who have helped you prepare for the journey ahead.

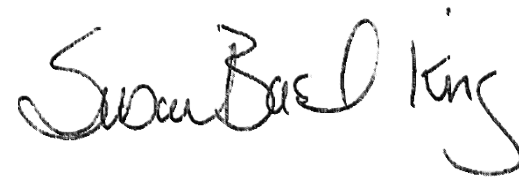
Maxine and Win Wallin began a scholarship program in 1992 to help students with financial need go to college and earn a degree. They believed that equal access to higher education was essential to a healthy economy and the best possible investment in the future of Minnesota. The Wallin family's legacy of helping others continues to this day.

Over the years, many donors have partnered with Wallin to support scholars and help the organization build a strong program and an exceptional staff. Some donors like the Holman family, the Enterprise Foundation, Ron and Joan Cornwell and many others have been donor partners for years supporting hundreds of students. Others like Jeff and LeeAnn Ettinger, the Bush Foundation, and Federated Insurance have provided support to expand our program to new communities.

Our corporate donor partners including, U.S. Bank, Medtronic, Boston Scientific and Anderson Corporation, among others, recognize the value of providing scholarships, internships and employment opportunities to Wallin scholars. Finally, NorthStar Education Finance has supported 1,037 students

attending both two-year community college and four-year institutions. Their level of generosity has transformed Wallin and significantly expanded our impact.

We look forward to collaborating with you to ensure your college experience is rich and meaningful and leads to a fulfilling career. Our trustees, staff, and donors will be cheering you on. Congratulations and welcome to Wallin Education Partners.

A handwritten signature in black ink that reads "Susan Basil King". The signature is fluid and cursive, with the first name "Susan" being the most prominent.

Susan Basil King
President and CEO



TABLE OF CONTENTS

Chuck Denny Award.....	6	Enterprise Scholars.....	44	NorthStar Education Finance Scholars.....	74
3M Scholars.....	8	Esther Johnson Scholar.....	47	Piper Sandler Scholars.....	102
Aditus Foundation Scholars.....	10	Ettinger Scholars.....	48	Randall Family Scholars.....	104
Albright Scholar.....	12	Fahnestock Scholar.....	50	Robert and Ardis James Foundation Scholars.....	106
Andersen Corporation Scholars.....	14	Federated Insurance Scholars.....	52	Robinson Kurkowski Scholar.....	108
Archibald Bush Scholars.....	16	G. Robert Strauss Jr. Scholar.....	54	Ruth and Raymond Reister Scholars.....	109
Basil King Scholar.....	20	Halverson Scholar.....	55	SFM Bob Lund Scholar.....	110
Boston Scientific Scholars.....	22	Holman Scholars.....	56	Sit Investment Associates Scholar.....	111
Brian and Mia Sullivan Scholars.....	24	Horton Scholar.....	59	SPS Commerce Scholar.....	112
Brown Family Scholar.....	25	Jackson Scholar.....	60	Star of the North Scholars.....	114
Building Strong Families Scholars.....	26	Amy and Daryl Johnson Scholars.....	61	Straiton Scholar.....	122
Christensen Family Scholar.....	30	Kirwin Scholar.....	62	Think IT Young Professional Scholars.....	124
Columbia Threadneedle Investments Scholars.....	32	Kurt and Paula Meyer Scholar.....	63	U.S. Bank Scholars.....	126
Cornwall Scholars.....	34	Maybloom-Suzukamo Scholars.....	64	Wallin Foundation Scholars.....	130
Cornwell Scholars.....	36	Medtronic Scholars.....	66	Well-Being of All Foundation Scholar.....	144
Diane and Darryl Sannes Scholar.....	38	Mitau/Kircher Scholar.....	68	Woodruff Scholar.....	145
Dixon Scholar.....	40	Mulrone, Larson and Eldred Scholars.....	70		
Donaldson Scholar.....	42	Nellie Griswold Francis and William T. Francis Scholars.....	72		
Dove Scholar.....	43				



Chuck Denny AWARD



Chuck Denny was a successful businessman, community leader, and philanthropist. Wallin Education Partners was the lucky recipient of his leadership and vision. At his memorial service in November 2019, Chuck was remembered for his statesmanship and innumerable contributions to Minnesota.

As Chairman of the Board of Wallin Education Partners at a critical point in our history, Chuck's clarity of purpose, integrity, and kindness left an indelible mark on the organization. Established in 2016, the Chuck Denny Award is given annually to Wallin Scholars who are continuing their education in graduate school and who, through their involvement and commitment to our community during college, have demonstrated a commitment to civic engagement and public service.



CHASIDY BUSTAMANTE CHICAIZA

.....

Political Science major (Communications & Legal Studies minors) at St. Thomas School of Law

Chasidy Bustamante Chicaiza is graduating from the University of St. Thomas this spring with a bachelor's degree in Political Science and minors in both Communications & Legal Studies. Chasidy's family emigrated from Ecuador and through her experience, developed a great passion for supporting others in the immigrant community. This fall, Chasidy will be continuing her education through the University of St. Thomas School of Law! Wallin Education Partners is pleased to select Chasidy Bustamante Chicaiza as the recipient of the Chuck Denny Award in 2023. Congratulations, Chasidy!

3M SCHOLARS

DONOR PARTNER SINCE 2009
SCHOLARS SUPPORTED: 75



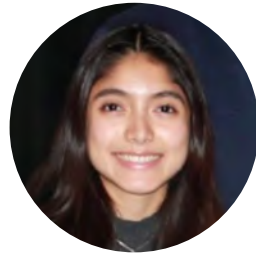
3Mgives has partnered with Wallin Education Partners since 2009 to offer college scholarships and professional advising services to students who are furthering their education in science, technology, engineering, or business.

3M has helped to improve lives through innovative products and solutions as well as investments in our communities around the world. Since 1953, 3M has donated nearly \$1.6 billion in cash and in-kind gifts to education and nonprofit organizations. 3Mgives has partnered with the St. Paul Public School District for over 40 years to help students achieve, graduate, and be ready for postsecondary education.



EDLYN FONTEH

.....
Park High School
University of Minnesota Twin Cities



ALEJANDRA GRANILLO

.....
Spring Lake Park High School
University of Minnesota Twin Cities



ANTONIO GUERRERO GARCIA

.....

Robbinsdale Armstrong High School
University of Minnesota Twin Cities



SALINA SANG

.....

John F Kennedy Senior High School
University of Wisconsin-Madison



Edelyn Fonteh
3M Scholar

Aditus Foundation SCHOLARS

DONOR PARTNER SINCE 2023
SCHOLARS SUPPORTED: 2

.....

The Aditus Foundation opens doors and provides access. Its founders, Becky and Dave Anderson, experienced the importance of education to their growth while needing to self-fund their post-secondary costs. That was hard 30 years ago and feels impossible at times today. Aditus was created to propel deserving students who need a boost for college access and success.

We are proud to support Wallin Education Partners' great work by sponsoring two Aditus scholars in this exciting step in pursuit of reaching their highest potential. We look forward to seeing their progress, accomplishments, and community impact.

Donors • Becky and Dave Anderson



ELLE FERNANDEZ

.....

Hope Academy
St. Catherine University



EYOB TEKELE

.....

Hope Academy
University of Minnesota Twin Cities



Where
Scholars
Rise
Education partners

Where
Scholars
Rise
Education partners

Where
Scholars
Rise
Wallin Education partners

Albright SCHOLAR

DONOR PARTNER SINCE 2014
SCHOLARS SUPPORTED: 3

.....

Rob and Carolyn Albright founded the Albright Foundation in 2005 to focus on education, social services, and the environment. Over time, it has become predominantly focused on education, because Rob and Carolyn believe education is the basic solution to many other social problems “downstream.” Rob is a principal at Alternative Strategy Advisers, a money management firm based in Minnetonka. Carolyn was an ER/ICU nurse until their two children were born. Carolyn is very active with Edina schools and kids’ activities. Rob works with a number of non-profit organizations and is the Treasurer of Minnesota Comeback. Rob and Carolyn have supported Wallin Education Partners, because they believe that helping young people continue their educational journey with a great college experience, graduation and an appreciation for lifelong learning is a great benefit to the individual scholars and to society.

Donor • Rob and Carolyn Albright



LUIS CORTEZ COYOTE

.....

Cristo Rey Jesuit High School
University of St. Thomas



Andersen Corporation SCHOLARS



DONOR PARTNER SINCE 2017
SCHOLARS SUPPORTED: 14



Andersen was founded in 1903 on the philosophy of working “all together” to deliver on its promise to its customers. Andersen delivers products for the way people live, unmatched performance for the comfort and security homeowners desire, and endless design options to achieve any style. Headquartered in Bayport, Minnesota, Andersen Corporation and its subsidiaries manufacture and market window and door products under the Andersen®, Renewal by Andersen® and MQ™ brands. Andersen, a privately held company with

more than 13,000 employees, operates 15+ manufacturing sites across North America and Europe. Andersen has earned the U.S. Environmental Protection Agency’s 2022 ENERGY STAR® Partner of the Year – Sustained Excellence Award and received multiple 2022 Forbes awards, including Best Employer for Diversity, Women and LGBTQ+.



ABDIRAHMAN AHMED

.....

Southwest High School
University of Minnesota Twin Cities



AHMED AHMED

.....

Roseville Area High School
University of Minnesota Twin Cities



Archibald Bush SCHOLARS



**BUSH
FOUNDATION**

DONOR PARTNER SINCE 2018
SCHOLARS SUPPORTED: 87

.....

The Bush Foundation invests in great ideas and the people who power them in Minnesota, North Dakota, South Dakota and the 23 Native nations that share the same geography. Established in 1953 by 3M executive and Granite Falls native Archibald Bush and his wife Edyth, the Foundation supports organizations and people who think bigger and think differently about what is possible in their communities.

We inspire and support creative problem solving — within and across sectors — to make the region better for everyone. The Archibald Bush Scholarship is made in honor of Archie, his belief in the power of people, and his lifelong commitment to St. Paul and Granite Falls. The Foundation remains committed to doing the most possible good with the resources Archie and Edyth left to the community.



SABRINA AHMED

.....

Humboldt Senior High School
St. Olaf College



IZABELLA ANDERSON

.....

Yellow Medicine East High School
Minnesota State University Moorhead



SELAM BEKELE

.....

Highland Park Senior High School
St. Catherine University



CHARLISE CHASE-PENDLETON

.....

Yellow Medicine East High School
University of Minnesota Twin Cities



CALEY COYNE

.....

Harding High School
Augsburg University



ABBAS FAHIM

.....

Harding High School
Metropolitan State University

Archibald Bush SCHOLARS



KATHERINE FLORES

.....

Yellow Medicine East High School
Minnesota State University Moorhead



KAYLA NORDAUNE

.....

Yellow Medicine East High School
University of South Dakota



SANG HER

.....

Harding High School
Hamline University



TYSON POPE

.....

Humboldt Senior High School
St. Olaf College



LESLIE LOPEZ-IBANEZ

.....

Highland Park Senior High School
Concordia University, St. Paul



TARRICK RUPP

.....

Yellow Medicine East High School
South Dakota State University



HARUN SULEYIMAN

.....

Central High School
University of St. Thomas



SEAN VANG

.....

Johnson Senior High School
Augsburg University



KANLAYA THAO

.....

Harding High School
University of Minnesota Twin Cities



KRIS XIONG

.....

Central High School
St. Olaf College

Basil King SCHOLAR

DONOR PARTNER SINCE 2023
SCHOLARS SUPPORTED: 1



This scholarship is supported by Susan Basil King and Robert King in recognition of the efforts of so many to improve college access and success for students. As President and CEO of Wallin for ten years, Susan has seen firsthand the positive, lasting impact that collaboration and partnership can have on students, their families, and our community. Both Bob and Susan are grateful for the opportunity to have been a part of the Wallin community.

Donors • Susan Basil King and Robert King



RHIANNA ANYA



Thomas Jefferson Senior High School
College of St. Benedict



Boston Scientific SCHOLARS



DONOR PARTNER SINCE 2013
SCHOLARS SUPPORTED: 23



Boston Scientific transforms lives through innovative medical solutions that improve the health of patients around the world. As a global medical technology leader for more than 35 years, we advance science for life by providing a broad range of high-performance solutions that address unmet patient needs and reduce the cost of healthcare.

Our Boston Scientific Scholars receive funding for their education, but our commitment goes far deeper. Participants in the program—who represent some of the most critically needed demographics in science and healthcare—gain access to internships, leadership and development opportunities, and the ability to participate in the company’s Employee Resource Groups. In doing so, Boston Scientific is investing in our future employees, future physicians, and future thinkers who will harness the powers of science to benefit humankind.



DANNA CRESPO NARVAEZ

.....

Cristo Rey Jesuit High School
University of Minnesota Duluth



SOFIA HERNANDEZ LIMAS

.....

Patrick Henry High School
University of Minnesota Twin Cities



SIMON NOBLE

.....

Washburn High School
Carleton College



Brian and Mia Sullivan SCHOLARS

DONOR PARTNER SINCE 2022
SCHOLARS SUPPORTED: 3



Brian and Mia Sullivan are among a group of donors who have joined with Wallin Education Partners to sponsor scholarships and support students through their college years.

You are selected as a Sullivan scholar because of your potential to be successful in college and in your career. We believe your motivation, experiences, and contributions to the community have prepared you for a great future!

Donors • Brian and Mia Sullivan



RAYSA LOJA GRANDA



Hope Academy
Bethel University



JASMINE PALCHIZACA



Hope Academy
Bethel University

Brown Family SCHOLAR

DONOR PARTNER SINCE 2021
SCHOLARS SUPPORTED: 3

.....

Alisa and Dan Brown established the Brown Family Scholarship as their first step in implementing real, meaningful change. They sent their children to school and felt they could do the same for others. They realize there are inequities in our society and believe supporting the attainment of a college education is a real stepping stone to advancement and equality.

It is their hope that the Brown Family Scholarship provides real meaning to their recipients and helps create a platform of success for themselves and their families.

Donors • Alisa and Dan Brown



LANIYA HARPER

.....

North Community High School
Augsburg University

Building Strong Families SCHOLARS

DONOR PARTNER SINCE 2022
SCHOLARS SUPPORTED: 19



The Sauer Family Foundation invests in strengthening the well-being of children, so they thrive in their families and communities. We are honored to work with Wallin Education Partners in support of scholars who share our vision that all children grow up supported and nurtured. The degrees these students pursue, and their future careers, are an essential part of Building Strong Families across Minnesota.

When children and youth connect with adults that look like them, they feel like they belong. These scholars represent the future; a workforce that truly reflects the diversity of Minnesota's children. We applaud the hard work that got them this far and celebrate with them as they continue their journeys.



SAUER FAMILY
— FOUNDATION —



LAWSON ALEXANDER

.....

College of St. Scholastica



LANGSTON BUTLER

.....

University of Minnesota Twin Cities



ESPERANZA CARRERA MURGA

.....

St. Olaf College



HAMDI DAAHIR

.....

Augsburg University



ADRIANA HERNANDEZ CRUZ

.....

Metropolitan State University



FARDOWZA HILOWLE

.....

Metropolitan State University

Building Strong Families SCHOLARS



FRANCISCO LARA CHAVEZ

.....

Metropolitan State University



LEYLA MOHAMED

.....

Metropolitan State University



AISHA M IBRAHIM

.....

Winona State University



ASHLEY PATTERSON

.....

Metropolitan State University



NAW PAW

.....
Augsburg University



AYASHA WILLIAMS

.....
Minnesota State University Mankato



ANISIA SMITH

.....
Minnesota State University Mankato



JULIA WIN

.....
Augsburg University

Christensen Family SCHOLAR

DONOR PARTNER SINCE 2016
SCHOLARS SUPPORTED: 4

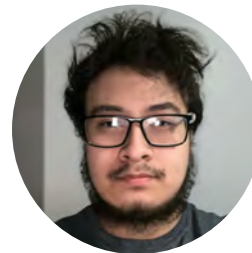
.....

In 2023, we are humbled and honored to be sponsoring our fourth scholar. In deciding how we could make the biggest impact to individual lives and the community, we thought, and now strongly believe, that supporting a Wallin Scholar provides immeasurable returns.

Currently, we are watching our own four children pursue their educations and interests, and have been fortunate to be able to guide them and provide financial support in this pursuit. We want to go beyond our own doorstep. We want to make a difference in an intelligent, ambitious, and driven student's pursuit of their own education, to help provide access to the resources to make their college education a reality, and to be one stepping stone in helping them achieve their dreams. In our own careers, we have seen the possibilities that can be realized when combining a solid education with the pursuit of passions.

We want to make this world a better place, and that starts with giving educational opportunities to well-deserving people, like Wallin Scholars.

Donors • Amy and Mark Christensen



BRYAN ROMERO RIVERA

.....

Columbia Heights High School
University of Minnesota Twin Cities



Columbia Threadneedle Investments SCHOLARS



DONOR PARTNER SINCE 2023
SCHOLARS SUPPORTED: 2



Millions of people around the world rely on Columbia Threadneedle Investments to manage their money and invest for their future. We look after investments for individual investors, financial advisors and wealth managers, as well as insurance firms, pension funds and other institutions. With more than 2,500 people, including over 650 investment professionals based in North America, Europe and Asia, we manage \$584 billion of assets across developed and emerging market equities, fixed income, asset allocation solutions and alternatives.¹

Columbia Threadneedle Scholars receive funding for their education, but our commitment runs deeper. Participants in the program will spend time in our Minneapolis office with employees and senior leaders to learn more about the company and what a career in asset management looks like. In doing so, Columbia Threadneedle looks to continue our focus on diversity, equity and inclusion by supporting improvements in the areas of recruitment, advocacy and development of diverse talent within our firm and the industry as a whole.

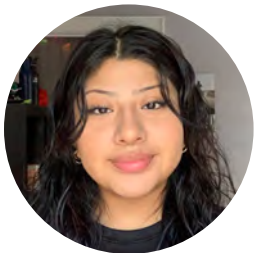
¹Source: Columbia Threadneedle Investments as of December 31, 2022.



JENNIFER PENA

.....

Columbia Heights High School
University of St. Thomas



HEIDI RAMOS PAVON

.....

Cristo Rey Jesuit High School
University of St. Thomas



Cornwall SCHOLARS

DONOR PARTNER SINCE 2013
SCHOLARS SUPPORTED: 44

.....

Mary Ann and Looe Baker III are among a group of donors who have joined with Wallin Education Partners to sponsor scholarships and support students through their college years. The Bakers believe that education is critical for success in the workplace, and are proud to provide you with the help of a scholarship. The Bakers selected you as a Cornwall Scholar because of your potential to be successful in college and in your career. They believe your motivation, contributions to our community, and potential to achieve great things are inspiring. They stand behind you and are continually rooting for your success.

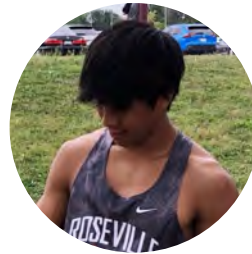
Donors • Mary Ann and Looe Baker III



KEELY ANDERSON

.....

Anoka High School
St. Olaf College



PAUL AYE

.....

Roseville Area High School
Augsburg University



KELLY CAMBI

.....

De La Salle High School
University of Minnesota Twin Cities



KEVIN MARTINEZ HERRERA

.....

Saint Louis Park High School
University of Minnesota Twin Cities



TSION KEBEDE

.....

Robbinsdale Cooper High School
University of Minnesota Twin Cities



BRYAN PAUCAR

.....

De La Salle High School
University of St. Thomas

Cornwell SCHOLARS

DONOR PARTNER SINCE 2002
SCHOLARS SUPPORTED: 179

.....

In 2002, we awarded our first Cornwell Scholarships. Since then, we have had the greatest pleasure from seeing our students attend college, graduate, and go out in this world bringing their unique talents and their education to get good jobs and to give back to our community.

We care deeply about this community and its future. There are so many young people with great potential who need a little support to help them achieve their goals. It has been such a pleasure for us to get to know students from a wide range of diverse backgrounds. We see their determination and motivation to do well in school so that they can get fulfilling jobs and have a positive impact on our community. It is a blessing for us to know and help these young scholars.

Donors • Joan and Ron Cornwell



SHAD AMEDZONEKOU

.....

South High School
Macalester College



MARSEN BEKELE

.....

South High School
Macalester College



MAXIMUS JENNINGS

.....

Southwest High School
University of Minnesota Twin Cities



JARRAH MCDONALD

.....

Fair School Downtown
University of Minnesota Twin Cities



SONORA PONCEK-DELUCA

.....

South High School
University of Minnesota Twin Cities



JESSICA NAPOLES INIGUEZ

.....

Roosevelt High School
University of St. Thomas



JOSUE VEGA FLORES

.....

South High School
University of Minnesota Twin Cities

Diane and Darryl Sannes SCHOLAR

DONOR PARTNER SINCE 2021
SCHOLARS SUPPORTED: 2

.....

Diane and Darryl Sannes, both retired Medtronic employees, worked there during Win Wallin's time as CEO. Both were impressed by his vision, leadership skills, approachability, and his giving back to the community. They were aware of the Wallin Education Partners Scholarship Program and in 2021 decided to become Donor Partners.

Diane and Darryl, both took the long road to college degrees, working full- and part-time to finance their education. With this, they missed out on the full college experience.

They volunteer with local schools and want to do more, helping graduates further their education and have a full college experience. Using their good fortune as Medtronic

employees, Diane and Darryl would like to help local high school graduates achieve their educational goals and make it possible to have a rewarding and successful career.

Donors • Diane and Darryl Sannes



LESLEY MCGASTER

.....

Park Center Senior High School
Minneapolis College of Art and Design



Dixon SCHOLAR

DONOR PARTNER SINCE 2009
SCHOLARS SUPPORTED: 10

.....

George H. Dixon and Marjorie “Peggy” Dixon moved to Minnesota in 1968 when George became President of the First National Bank of Minneapolis. Both immediately became involved in the larger community. Peggy and George served on many nonprofit boards. George was a director of a number of public companies and a Trustee of Carleton College for 25 years and Board Chair for five. He served as Deputy Secretary of the Treasury in the Ford Administration and returned to Minnesota to head First Bank System, a predecessor of US Bank.

Both George and Peggy were intellectually curious and personally adventuresome. Peggy had grown up sailing in Rhode Island, and after George’s retirement they had a sailboat built in England, and they and their children sailed it across the Atlantic to the Caribbean. Peggy was an accomplished gardener. George raised bees for 60 years and read widely, including physics and astronomy. They were

extremely generous people as well.

George chaired the search committee that brought Steve Lewis to Carleton as President in 1987. The Dixons were good friends and strong supporters of Steve and Judy Lewis at Carleton. The Lewises, whose parents believed in the importance of education, established this scholarship in their honor.

The Dixon Scholarship is in its tenth year of being awarded. Through the Lewises’ generosity, the new Dixon scholar joins five Dixon scholars and two Lewis-Frost scholars.

Donors • Steve and Judy Lewis



ANTHONY VAZQUEZ

.....

Cristo Rey Jesuit High School
Carleton College

Donaldson SCHOLAR

DONOR PARTNER SINCE 2017
SCHOLARS SUPPORTED: 6

.....



For over 105 years, Donaldson has been a global leader in developing innovative filtration products and solutions. The company serves customers across nearly every industry and sector, from life changing therapies in biotechnology to the world's biggest original equipment manufacturers. With a relentless passion for innovation, decades of expertise, and a commitment to doing the right thing in business and community, Donaldson's team is dedicated to advancing filtration for a cleaner world.

Founded in 1966, the Donaldson Foundation strives to make a meaningful impact in our communities. We proudly support programs and organizations that direct time and effort toward education. Program grants provided by the Donaldson Foundation impact a broad range of educational interests in our communities, including early childhood development, K-12, postsecondary, adult learner, and self-sufficiency education.

"Donaldson wants all children to see themselves in STEM," said Sarah Swenson, President of the Donaldson Foundation. "Education is the primary focus of the Donaldson Foundation so we are excited to work with Wallin Education Partners to provide this grant to help another, high-potential student pursue their interest in a STEM field."



MO MOHAMMED

.....

Washington Technical Magnet School
University of Minnesota Twin Cities

Dove SCHOLAR

DONOR PARTNER SINCE 2019
SCHOLARS SUPPORTED: 2

.....

Cyrie Holman graduated in 2016 from the University of Arizona with a degree in Physiology and a minor in Sales and Marketing, and she is now working as a surgical device sales representative. The Dove Scholarship is named after the symbol of an organization she was involved with in college whose values are personal growth, friendship, service, and loyalty.

The Dove Scholarship is intended to help young women interested in careers in the medical field. It is Cyrie's hope that this scholarship will provide support to help its recipients graduate, go on to successful careers, and to share that future success in service to others.

Donor • Cyrie Holman




SIHAM MOHAMED

.....

Osseo High School
University of Minnesota Twin Cities



**Where
Scholars
Rise** 

Wallin Education Partners

**Where
Scholars
Rise** 

Wallin Education Partners

**Where
Scholars
Rise** 

Wallin Education Partners

**Where
Scholars
Rise** 

Wallin Education Partners

**Where
Scholars
Rise** 

Wallin Education Partners

Enterprise SCHOLARS

DONOR PARTNER SINCE 2010
SCHOLARS SUPPORTED: 177

.....

Funding for the Enterprise Scholars is provided by the Enterprise Education Foundation, which was established to provide scholarships to academically qualified students from the Twin Cities area. We would like to especially acknowledge Vern Beck, who was the major contributor to our foundation. Vern left much of his estate to the Enterprise Education Foundation to help support a positive future for the young people of our community.

Our objective is to assist students from the Twin Cities area who are academically qualified, have financial need, and have demonstrated leadership skills while in high school. We support scholars with an interest in the study of business or STEM programs. Enterprise has partnered with Wallin Education Partners since 2009, supporting 158 scholars. We know that supporting students is an investment in young people's education that will make a difference in our community.



HAWWA ABDULLAHI

.....

Edison Senior High School
University of St. Thomas



AMEYALLI ARACEN ROMERO

.....

Highland Park Senior High School
University of Minnesota Twin Cities



ERIC BARTZ

.....

Blaine High School
Hamline University



GELILA BELETE

.....

South St Paul Secondary (11-12)
University of Minnesota Twin Cities



ANGELINA DAY

.....

Washburn High School
University of Minnesota Twin Cities



Addi Glass
Enterprise Scholar

Enterprise SCHOLARS



ADAM DOURI

.....

Richfield Senior High School
University of Minnesota Twin Cities



ADDI GLASS

.....

Anoka High School
North Dakota State University



MAJEED KHORI

.....

Champlin Park High School
University of Minnesota Twin Cities



DAGEMAWIE MEKONNEN

.....

Washington Technical Magnet School
University of Minnesota Twin Cities



JASON NGUYEN

.....

Spring Lake Park High School
University of Wisconsin-Madison



TONY RUTHERFORD

.....

Richfield Senior High School
University of Minnesota Twin Cities

Esther Johnson SCHOLAR

DONOR PARTNER SINCE 2008
SCHOLARS SUPPORTED: 13

.....

My mother, Esther Johnson, would have been a very good candidate for a Wallin Education Partners scholarship. From a poor farming family in southern Minnesota, she was oldest of seven children and first to graduate from high school. When it was time for her to continue her education, her mother became very ill and she was needed at home to care for her brothers and sisters. Mother was a genius at math and I know she would have thrived in college. I remember her with happiness and gratitude when a scholarship is given in her name.

Donor • Ardes Johnson



KATI BELINA

.....

Mounds View High School
University of Minnesota Twin Cities

Ettinger SCHOLARS

DONOR PARTNER SINCE 2016
SCHOLARS SUPPORTED: 43

.....

The Ettinger Scholars are sponsored by Jeff and LeeAnn Ettinger. They believe in the value of education and find it gratifying to help hard-working young people reach for their dreams. They live in Austin, Minnesota, and have four adult children.

Donors • Jeff and LeAnn Ettinger



LYDIA BARON

.....

Austin High School
Carroll University



JESSYCA GBAGUIDI

.....

Austin High School
Howard University



MADDISON HOESING

.....

Austin High School
University of Wisconsin-La Crosse



BUAY KOAK

.....

Pacelli High School
Southwest Minnesota State University



DARYL WILSON-DOKPODJO

.....

Austin High School
Minnesota State University Mankato



LILLY PAUL

.....

Pacelli High School
Saint Mary's University of Minnesota



KARA WOLFS

.....

Austin High School
University of Wisconsin-La Crosse

Fahnestock SCHOLAR

DONOR PARTNER SINCE 2023
SCHOLARS SUPPORTED: 1

.....

Erik and Linnea Fahnestock grew up, got married, and now live in St. Paul, MN. They both graduated from college in 2013. Erik graduated from Pacific Lutheran University with a degree in Communications with a Public Relations and Advertising emphasis. Erik now works in financial technologies focusing on early paycheck access. Linnea graduated from Wheaton College with degrees in Communications: Theater and Business/Economics. She is now a Program Manager for a youth development non-profit where she leads theater and arts programming. Education and community impact have always been important to both of them. They are excited to support future leaders through this scholarship. The Fahnestock Scholar exemplifies leadership skills, volunteerism, passion, and the potential for positive impact.

Donors • Linnea and Erik Fahnestock



KATLIN HER

.....

Harding High School
University of Minnesota Twin Cities



Federated Insurance SCHOLARS

DONOR PARTNER SINCE 2021
SCHOLARS SUPPORTED: 6

.....



Federated Insurance believes deeply in supporting the communities where our employees live and work. Our internal culture is rooted in the approach of “giving back.” We believe that investing in education is investing in the future. Our support of this education scholarship helps to ensure that talented students have the best opportunity to achieve their educational goals and career dreams. We are proud to support a talent pipeline for the workforce of the

future and are thrilled to have started this partnership with Wallin Education Partners.

For more than 100 years, Federated Insurance® has made its business about people. Today, we provide commercial insurance and risk management services to more than 40,000 businesses in select industries. We are headquartered in Owatonna, Minnesota, and operate service offices across the country. As a multi-line company, we offer property, liability, surety, auto, workers compensation, umbrella, and life and disability income insurance coverage.



AIDAN CHARLES

.....

Owatonna High School
Gustavus Adolphus College



LILLY HIGHFIELD

.....

Owatonna High School
University of Wisconsin-Eau Claire



MIANNA RISSER

.....

Owatonna High School
Winona State University



JASMIN MATTA

.....

Owatonna High School
Minnesota State University Mankato



SAVANNAH SHERMO

.....

Owatonna High School
University of Minnesota Twin Cities

G. Robert Strauss Jr. SCHOLAR

DONOR PARTNER SINCE 2016
SCHOLARS SUPPORTED: 5

.....

This scholarship is established in memory of my best friend, G. Robert “Bob” Strauss, who was murdered in Cincinnati in a burglary gone wrong in his own home. Bob was only 27 at the time. A graduate of Harvard University and a recipient of an MBA from the Darden School of Business, Bob was destined for tremendous achievements in this world before his life was taken from him. Bob and I grew up together in Buffalo, New York, where we attended Nichols School, a demanding middle and high school. We became fast friends in the fifth grade and this friendship continued up until that fateful day in August 1988. This scholarship embodies all the potential that education has to offer and is one of the many ways that I have chosen to keep the memory of my friend alive.

Donors • Ted and Kathy Truscott



AKANIMO JONES

.....

Champlin Park High School
University of Wisconsin-Madison

Halverson SCHOLAR

DONOR PARTNER SINCE 2018
SCHOLARS SUPPORTED: 8

.....

We both came from families who valued education and we spent our careers in educational fields—Bruce as an elementary school teacher and Helen as a reference librarian in public libraries. We were fortunate that when we finished high school, a college education was financially feasible for many graduates. Unfortunately, the current high costs associated with educational programs beyond high school act as a barrier for many students so that they may not further their formal education or graduate with a lot of debt. Our goal is to help a motivated student achieve their dream of an advanced education that will open their life to many exciting opportunities.

Donors • Helen and Bruce Halverson



JEEYOON KWON

.....

Mounds View High School
Saint Mary's University of Minnesota

Holman SCHOLARS

DONOR PARTNER SINCE 2004
SCHOLARS SUPPORTED: 176



Tom and Kim Holman are the founders and Directors of the Morning Foundation, a private foundation established in 1996 to focus on children's education, health, and social services. Previously, Tom was an executive with Dell Computer Corporation and Kim was a senior manager with the Texas Department of Health. Tom and Kim have been active with a number of nonprofit organizations and enjoy spending time with their four daughters. Tom and Kim support scholars through Wallin Education Partners because they believe that education is not only important for individuals, it is also important for our society as a whole. Their hopes are that their scholars will find success in school and in life through determination, hard work, and support from others and that their scholars will pay it forward by helping others throughout their own lives.

Donors • Tom and Kim Holman



EVERLYN BALVOA GRANDA



Highland Park Senior High School
Augsburg University



KATELYN LEE



Harding High School
Augsburg University



DARARTU MUSSE

.....

Harding High School
St. Olaf College



VANESSA REYES ROMERO

.....

South High School
St. Catherine University





Horton SCHOLAR

DONOR PARTNER SINCE 2013
SCHOLARS SUPPORTED: 8

.....



Horton Incorporated is a leading provider of advanced airflow management solutions worldwide. Founded in 1951, the company focused on manufacturing industrial clutches through its early years. In the 1960s, Horton applied its expertise to fan clutches for cooling diesel engine trucks and off-highway vehicles. During the U.S. energy crisis in the 1970s, Horton convinced truck manufacturers that they could save fuel by running fan clutches on vehicles only when the engine required cooling. By the late 1980s, Horton fan drives became standard equipment for major truck manufacturers. During the last decade, Horton released a

variety of premium fan drives, fans, valves, and repair kits. In 2002, Horton entered the viscous fan drive market through acquisition. An additional acquisition in 2004 has fostered the expansion of the WindMaster® line of fans to include metal, plastic, and composite fans. Horton continues to provide the latest technology, the highest quality, and the most dependable products available. Horton is among a group of donors who have joined with Wallin Education Partners to sponsor scholarships and support students through their college years.

Horton Incorporated Scholars were selected because of their potential to be successful in college and in their career. Their motivation, contributions to their community, and their willingness to take rigorous classes will prepare them for a successful college experience.



DAMIAN XIONG

.....

Johnson Senior High School
University of Minnesota Duluth

Jackson SCHOLAR

DONOR PARTNER SINCE 2015
SCHOLARS SUPPORTED: 16

.....

Darren and Terry Jackson are the founders and Directors of the Jackson Family Foundation, a private foundation established in 1995 to address the disparities and needs of the underserved and marginalized in our society with a primary focus on education and social services. Darren is the Chairman of the Board of Cree Inc. and All-In Milwaukee. Previously, he served as CEO of Advance Auto Parts, CFO of Best Buy and Nordstrom. Terry serves as a community volunteer for Second Stork and All-In Milwaukee, Previously, Terry was an emergency room nurse at Children's Hospital of Wisconsin. Darren and Terry are active with a number of nonprofit organizations including Marquette University and the Drexel Fund. They have three grown children and one granddaughter.

Darren and Terry support scholars through Wallin Education Partners and founded All-In Milwaukee because of their passion for social justice and the extraordinary outcomes

these programs provide as a foundation for a meaningful life. Their hopes are that the scholars are catalysts for positive and sustainable improvements for their families, local communities, and society as a whole.

Donors • Darren and Terry Jackson



ASHLEY MARTINEZ GAMINO

.....

Cristo Rey Jesuit High School
University of Minnesota Twin Cities

Amy and Daryl Johnson SCHOLARS

DONOR PARTNER SINCE 2023
SCHOLARS SUPPORTED: 2

.....

We believe that education is a basic human right, a wonderful lifelong endeavor, and is the essential element for people to realize their full potential.

Having sponsored student education in Kenya for many years, we understand the incredible impact learning has on students, their families, and their communities. We are proud to join Wallin Education Partners to support talented young Americans as they transform their lives through education and to celebrate them making their mark on the world.

Donors • Amy and Daryl Johnson



AKUA ANOHENE

.....

Spring Lake Park High School
University of Minnesota Twin Cities



SHENG VANG

.....

Robbinsdale Cooper High School
University of Minnesota Twin Cities

Kirwin SCHOLAR

DONOR PARTNER SINCE 2016
SCHOLARS SUPPORTED: 7

.....

Paul and Jill Kirwin launched the Kirwin Scholarship as part of their commitment to help talented and aspiring young women achieve their vision for a brighter future through higher education. They believe firmly in the power of education and hard work to create opportunity and advancement for all Americans.

After a five-year battle with cancer, Jill passed away in 2020. She took great pride in meeting and supporting our scholars over the years. The next generation of Kirwins, Lexi and Tina, look forward to continuing the Kirwin Scholarship well into the future.

Donor • Paul Kirwin



SHAINÉ KILYUN

.....

Champlin Park High School
University of Minnesota Twin Cities

Kurt and Paula Meyer SCHOLAR

DONOR PARTNER SINCE 2023
SCHOLARS SUPPORTED: 1

.....

Kurt and Paula Meyer both believe profoundly in the power of education to lift people's prospects and perspectives. They are excited to partner with a Wallin scholar to support life transformation through education. Kurt and Paula split their time between the Twin Cities and their home in rural North Iowa (just south of Austin, MN). They are both very involved with a variety of non-profit organizations. Paula is the founder and President of Friends of Ngong Road, an organization that provides education and support to impoverished children in Nairobi. Friends of Ngong Road has assisted more than 580 students on their educational journey. Kurt spent his career consulting with non-profit organizations on strategy, board development and fundraising. He currently serves on the boards of directors of five organizations with missions in the arts, education and health care areas. Kurt and Paula look forward to this new journey with a Wallin scholar.

Donors • Paula and Kurt Meyer



DAVID VU

.....

Austin High School
University of Minnesota Twin Cities

Maybloom-Suzukamo SCHOLARS

DONOR PARTNER SINCE 2016
SCHOLARS SUPPORTED: 22

.....

The Maybloom-Suzukamo Scholarship was established to honor Iris Maybloom, a gifted and inspirational American History teacher and counselor in Los Angeles. She helped generations of students prepare for college, particularly students of color who had no clear roadmap of how to get there. Her students learned not just to memorize dates, names, and places but to see the real people of history, both the famous and the ordinary. Her teaching method was one part standup comedy, one part Socratic inquiry, and one part Spanish Inquisition, as we were prodded, cajoled, and terrorized into coughing up an original thought.

Iris introduced us to “The Scarlet Letter,” “The Grapes of Wrath,” and “The Great Gatsby.” For some of us, it was the first real literature we’d ever read.

Her tools were the handwritten college essay exam and typed, footnoted research papers that required bus rides to

university libraries. By the end of the semester, we learned how good writing and critical thinking were inextricably tied.

But most importantly, Iris taught her students to dream bigger. She told us not to stare at the daunting cost of college but to focus on the vistas beyond. College wasn’t a destination in and of itself but a jumping-off point.

In that spirit, we award these scholarships to a new generation of students of color. We hope these awards help them find their own vistas and enjoy the view before they make the next leap in their lives.

Donors • Karen and Les Suzukamo



ARIAH CROSBY

.....

Johnson Senior High School
University of St. Thomas



LIYA GUAN

.....

Johnson Senior High School
Carleton College



ROB HTOO

.....

Harding High School
St. Olaf College



MARIAH MCCASTER

.....

Johnson Senior High School
St. Catherine University



ALEX PEREZ

.....

Harding High School
Minnesota State University Mankato

Medtronic SCHOLARS



Medtronic
FOUNDATION

DONOR PARTNER SINCE 2008
SCHOLARS SUPPORTED: 190

.....

The Medtronic Foundation focuses on improving lives for underserved populations worldwide, as well as supporting communities where Medtronic employees live and give. Our vision is a world where every person has equitable access to quality healthcare and education. We are proud to support the Wallin Education Partners, founded by former

Medtronic CEO Win Wallin. For years, this program has helped spark future generations of leaders, healthcare professionals, and science innovators that will make the world a healthier place to live. We see support for work like this as one of the ways the Medtronic Foundation strives to improve the lives of communities around the world.



ANA CAMACHO RENDON

.....
Hiawatha Collegiate High School
St. Olaf College



ARNOU THAMMARAK

.....
Irondale Senior High School
University of Minnesota Twin Cities



JIZELLE LOBLEY

.....
Mounds View High School
Howard University



SULIN VANG

.....
Patrick Henry High School
Hamline University



RAZAN SHAHIN

.....
Woodbury High School
University of Minnesota Twin Cities

Mitau/Kircher SCHOLAR

DONOR PARTNER SINCE 2023
SCHOLARS SUPPORTED: 1

.....

In 1937, my father, G. Theodore Mitau, came to this country as a student/refugee from Berlin, Germany. He was 17 years old, Jewish, and spoke little English. He stayed with relatives in New York and attended New York University. Through hard work, good luck and the help of individuals and funding agencies, he came to St. Paul, Minnesota, and became a student and teacher at Macalester College. Ted Mitau, as he was known, served as a political science professor at Macalester College for nearly forty years, encouraging students to think carefully about the public sector and how government works. He became chair of the department, and was later appointed by the Governor as the first Chancellor of the Minnesota State College System. His wife, and my mother, Charlotte Mitau, were active in civic affairs and educational administration through the PTA and later, as chair of the St. Paul School Board. Both Mitau children, my brother, Lee Mitau, and I became lawyers and coincidentally, married lawyers.

It is therefore, not surprising that I strongly believe education can be a key to a productive and successful life, and I am pleased to be able to pass on educational opportunity to others. I recently learned about the Wallin Education Partners, and I am happy to be a partner in this endeavor.

Donor • Andrea Mitau Kircher



NEVAEH DOBYNE

.....

Saint Louis Park High School
Morgan State University



Mulrooney, Larson and Eldred SCHOLARS

DONOR PARTNER SINCE 2022
SCHOLARS SUPPORTED: 8



Mike Mulrooney has joined with Wallin Education Partners to sponsor scholarships and support students through their college years.

Mike Mulrooney selected you as a Mulrooney, Larson, Eldred scholar because of your potential to be successful in college and in your career. They believe your motivation, experiences, and contributions to the community have prepared you for a great future!

Donor • Mike Mulrooney



HANNAH DEEN-KARGBO



Harding High School
Hamline University



VIOLET DUPREE-HEBERT



Hopkins High School
University of Minnesota Twin Cities



JESIAH MASON

.....

Como Park Senior High School
Augsburg University



DENISE PLIEGO GALAN

.....

Patrick Henry High School
Augsburg University



Nellie Griswold Francis & William T. Francis SCHOLARS

DONOR PARTNER SINCE 2021
SCHOLARS SUPPORTED: 6

.....

In 1914, Nellie Griswold Francis founded the only black women's suffrage organization in Minnesota. Over the course of several years, she was a pioneer in Minnesota for voting rights and racial justice in addition to being an accomplished singer and local church leader. William Francis was a railroad lawyer early in his career, later establishing a successful private law practice. He was a Republican and ran unsuccessfully for city and state-wide offices. Also an accomplished singer, he and Nellie married in 1893. They lived in St. Paul until 1927, when William Francis was appointed Minister and Consul to Liberia, West Africa. The first African-American diplomat from Minnesota, William investigated and reported on the Liberian government's complicity in the forced labor of Liberian men. Tragically, William died in Monrovia of yellow fever in 1929.

Nellie and William are further distinguished by an experience they endured while living in St. Paul. In 1925, they moved

from the Rondo neighborhood to the Macalester-Groveland neighborhood, where they experienced direct, virulent racial hatred at the hands of a self-identified neighborhood improvement association. They were "encouraged" by white neighbors to move out of the neighborhood with cross-burnings and protests at their home. The Francises did not yield. They continued to live in the neighborhood for more than two years before William was appointed to his diplomatic post. Today, Macalester-Groveland continues to be a popular neighborhood in St. Paul. It is approximately 90 percent white, with home values at approximately 175 percent of the city's median. It is hoped that Nellie Griswold and William Francis will inspire scholars to aim high and persevere. Their story also reminds us all to give thoughtful consideration to our neighbors, those Minnesotans close to us, both geographically and on the historical timeline.

Donors • Frank Zink and Katie Reish



SUMAYA OMAR

.....

Central High School
University of Minnesota Twin Cities



YWA HAY PAW

.....

Como Park Senior High School
College of St. Scholastica



NorthStar Education Finance SCHOLARS



NorthStar

DONOR PARTNER SINCE 2014
SCHOLARS SUPPORTED: 799

.....

NorthStar Education Finance Inc. (NEF) is dedicated to helping students obtain an affordable education. It continues to support its other charitable purposes, which include: foster aid as well as encouraging and assisting students—especially first-generation students—in pursuing higher education. Supporting its mission, the company provides students who have existing loans issued under its Total Higher Education Loan Program (THE Loan Program) the lowest possible financing cost. In particular, NEF returns 90 percent of its excess revenues to student borrowers via the THE Repayment Bonus Program.

From 1996 to 2010, NEF was the 12th largest lender of postsecondary education loans in the United States. During that time, NEF made over \$7.5 billion in education loans. During its tenure as an active lender of education loans, NEF paid over \$125 million in origination fees on behalf of student borrowers to the U.S. Department of Education. To date, NEF has returned to its student borrowers over \$110 million in excess profits, allowing borrowers to more quickly pay down their education loan balances. NEF reserves an additional 10 percent of excess reserves for philanthropic purposes.

NEF's ongoing philanthropic goals are to:

- Help students pay down their existing balances by using 90 percent of its excess reserves to pay down their outstanding balances
- Continue to provide financial literacy education and assistance to these student loan borrowers to enable them to successfully repay their loans, and lead more productive lives
- Manage its financing as necessary to maximize the THE Repayment Bonus paid to borrowers
- Provide scholarship grants to other organizations to further NEF's educational mission

In support of its mission, NEF joined with Wallin Education Partners in 2014 to sponsor scholarships. In addition, NEF provides the Grad Ready financial literacy program to all current and incoming Wallin/NorthStar Scholars. Wallin Education Partners selects NorthStar Scholars based on their potential to be successful in college and in their future careers. Factors also considered are the scholar's motivation, contributions to the community, and their willingness to take rigorous classes in preparation for a successful college experience.



ANISA ABDI

.....

Edison Senior High School
University of Minnesota Twin Cities



HUDEIFI ABDIHAKIN

.....

Spring Lake Park High School
University of Minnesota Twin Cities



NASTEELHO ABDIQAFAR

.....

Roseville Area High School
University of Minnesota Twin Cities

NorthStar Education Finance SCHOLARS



ASWAN ABDISAMED

.....

Washburn High School
University of Minnesota Twin Cities



OJ ALAGBALA

.....

Osseo High School
University of Minnesota Twin Cities



RUQIA ABDIWAHAB

.....

Ubah Medical Academy
University of Minnesota Twin Cities



HANNAH ALHUNITI

.....

Roseville Area High School
Augsburg University



AHLAAM ABDULCADIR

.....

Hopkins High School
University of Minnesota Twin Cities



IBTISAM ALI

.....

Edina High School
University of Minnesota Twin Cities



BASHARMAL AMIN

.....

Wellstone International High School
University of St. Thomas



JESSICA ANAYA

.....

Two Rivers High School
University of St. Thomas



JADA ANDERSON

.....

Cristo Rey Jesuit High School
University of Minnesota Twin Cities



JORGE ARIZA-RIVERA

.....

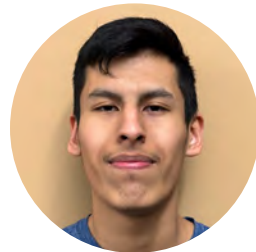
Cristo Rey Jesuit High School
University of St. Thomas



WAKAN AUSTIN

.....

Edison Senior High School
University of Minnesota Twin Cities

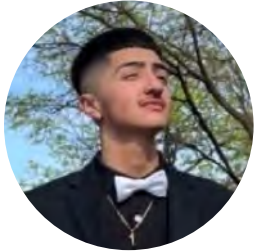


LUIS AYAVACA MEJIA

.....

Cristo Rey Jesuit High School
St. John's University (MN)

NorthStar Education Finance SCHOLARS



ALEX BARON FLORES

.....

Cristo Rey Jesuit High School
University of Minnesota Twin Cities



MATHEA BENSON

.....

Highland Park Senior High School
St. Olaf College



ZOEY BAUERMEISTER

.....

Washburn High School
University of Minnesota Twin Cities



ANKIT BHUJEL

.....

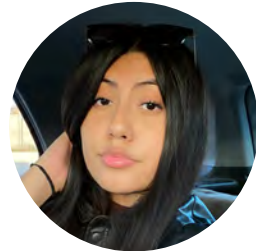
Roseville Area High School
University of Minnesota Twin Cities



VANESSA BENAVIDES

.....

Cristo Rey Jesuit High School
University of Minnesota Twin Cities



CAROL BRAVO

.....

Cristo Rey Jesuit High School
St. Catherine University



NorthStar Education Finance SCHOLARS



Hannah Alhuniti
NorthStar Education Finance Scholar



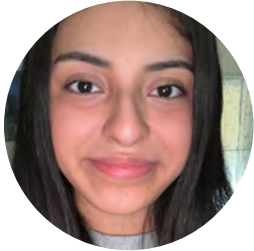
CHIA CHANG

.....
Central High School
University of Minnesota Twin Cities



OLIVIA CHAPIK

.....
Champlin Park High School
University of Minnesota Twin Cities



HANNIA CORTEZ HERNANDEZ

.....

Cristo Rey Jesuit High School
St. Olaf College



SALLMAN DAHIR

.....

Robbinsdale Cooper High School
University of Minnesota Twin Cities



ELSY CRUZ PARRA

.....

Richfield Senior High School
Augsburg University



EYICENI DIRCIO

.....

Wellstone International High School
Augsburg University

NorthStar Education Finance SCHOLARS



DAKAASHI DOWNWIND

.....

South High School
University of Minnesota Twin Cities



SABINE GOMEZ JIMENEZ

.....

Brooklyn Center High School
Augsburg University



NKURUNZIZA EMMANUEL

.....

Patrick Henry High School
Minnesota State University Mankato



EDDIE GONZALEZ

.....

Burnsville Senior High School
University of Minnesota Twin Cities



DIANA ESCOBAR

.....

Edina High School
Hamline University



EVELIN GONZALEZ CHIMAN

.....

Cristo Rey Jesuit High School
Carleton College



ARELY GUTIERREZ

.....

Cristo Rey Jesuit High School
University of St. Thomas



DEBORAH HABTOM

.....

South High School
University of Minnesota Twin Cities



NARIKA HAMPTON

.....

Patrick Henry High School
Augsburg University



ABDIAZIZ HASSAN

.....

Burnsville Senior High School
University of Minnesota Twin Cities



KENNYA HERNANDEZ HERNANDEZ

.....

John F Kennedy Senior High School
Minnesota State University Mankato



AJANAE HILL

.....

Central High School
Winona State University



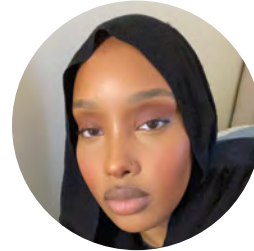
NorthStar Education Finance SCHOLARS



NIYA HOUSTON

.....

Washington Technical Magnet School
Saint Mary's University of Minnesota



SUWAYDA HUSSEIN

.....

Tartan Senior High School
Augsburg University



TYSEAN HUGHES

.....

Patrick Henry High School
Augsburg University



MADELYNN HUYNH

.....

Spring Lake Park High School
University of Minnesota Duluth



SALMA HUSSEIN

.....

Fridley High School
University of Minnesota Twin Cities



ABDI IBRAHIM

.....

Central High School
University of St. Thomas

NorthStar Education Finance SCHOLARS



ISRA IBRAHIM

.....
Osseo High School
University of Minnesota Twin Cities



AHLAM ISAK

.....
Edina High School
Augsburg University



SIHAM IBRAHIM

.....
Burnsville Senior High School
University of Minnesota Twin Cities



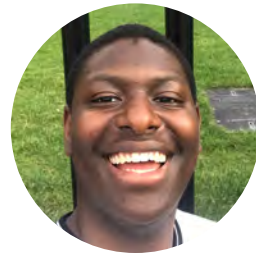
KELSEY JONES

.....
Burnsville Senior High School
University of Minnesota Twin Cities



ANDRES INAMAGUA

.....
Brooklyn Center High School
University of Minnesota Twin Cities



ABDUL KABBA

.....
Park Center Senior High School
Saint Cloud State University



MELODY KHANG

.....
Park Center Senior High School
St. Catherine University



ALAYNNA KRIZ

.....
Anoka High School
College of St. Benedict



NATHAN KHANG

.....
Tartan Senior High School
Metropolitan State University



JENNIFER LEE

.....
Harding High School
University of Minnesota Twin Cities



VERONIQUE KOLIBE-GNAMIKOU

.....
Fridley High School
St. Catherine University



MAIDER LEE

.....
Harding High School
University of Minnesota Twin Cities

NorthStar Education Finance SCHOLARS



HEIDI LLAPA GUAMAN

.....

Cristo Rey Jesuit High School
Hamline University



ANGIE MENDIETA

.....

El Colegio Charter School
University of Minnesota Twin Cities



VICENTE LOPEZ

.....

Cristo Rey Jesuit High School
Augsburg University



SOLYANA MENKIR

.....

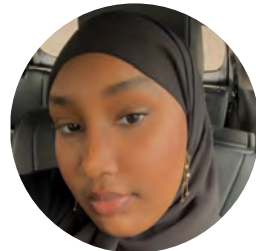
Columbia Heights High School
University of Minnesota Twin Cities



KATHY LOPEZ ORTEGA

.....

Cristo Rey Jesuit High School
College of St. Benedict



DUNEEYA MOHAMED

.....

Osseo High School
University of Minnesota Twin Cities



IDHIL MOHAMED

.....

Coon Rapids High School
University of Minnesota Twin Cities



OMAR MOHAMED

.....

Ubah Medical Academy
University of Minnesota Twin Cities



SAHRA MOHAMED

.....

Roseville Area High School
University of Minnesota Twin Cities



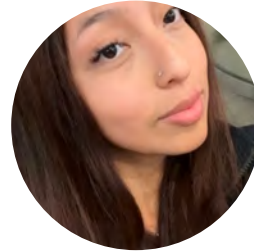
Dahir Munye
NorthStar Education Finance Scholar

NorthStar Education Finance SCHOLARS



SALAH MOHAMOUD

.....
Saint Louis Park High School
University of Minnesota Twin Cities



CARRIE MOROCHO GUAMBANA

.....
Cristo Rey Jesuit High School
St. Olaf College



HTEE MOO

.....
Harding High School
Bethel University



INGRID MOZO

.....
Cristo Rey Jesuit High School
University of St. Thomas



JASMINE MORALES

.....
Cristo Rey Jesuit High School
University of St. Thomas



GRACE MUA

.....
Roseville Area High School
University of St. Thomas



DAHIR MUNYE

.....

Park Center Senior High School
University of Minnesota Twin Cities



NAOMI NYAKUNDI

.....

Irondale Senior High School
University of Northwestern



STEPHEN NUSHANN

.....

Roseville Area High School
Augsburg University



BECCA OGEGA

.....

Park Center Senior High School
University of Minnesota Twin Cities

NorthStar Education Finance SCHOLARS



ABIGAIL OLADELE

.....

Burnsville Senior High School
Minnesota State University Mankato



MAYRA ONCE ALVARADO

.....

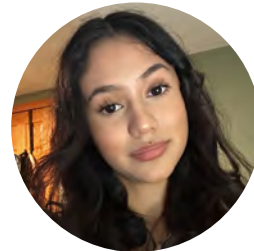
De La Salle High School
University of St. Thomas



GULLED OMAR

.....

Edina High School
University of Minnesota Twin Cities



ANGIE OROZCO ACOSTA

.....

Cristo Rey Jesuit High School
St. Olaf College



SURAYA OMER

.....

Roosevelt High School
St. Catherine University



TENZIN PALDEN

.....

Southwest High School
University of Minnesota Twin Cities



NorthStar Education Finance SCHOLARS



EVA PENA

.....

Irondale Senior High School
University of Minnesota Twin Cities



KAYLYNN PHETHDARA

.....

Champlin Park High School
University of Minnesota Twin Cities



TREY PETERSEN

.....

Richfield Senior High School
St. Olaf College



KAY RAKOW

.....

Champlin Park High School
St. Olaf College



THAO NGUYEN PHAN

.....

Park Center Senior High School
University of Minnesota Twin Cities



MONSERRAT REYES

.....

Cristo Rey Jesuit High School
St. Olaf College



LOUIE RINCON LOPEZ

.....

Blaine High School
St. Olaf College



FERN SALDIVAR

.....

Cristo Rey Jesuit High School
St. Olaf College



AYLIN KAREN ROMERO SANCHEZ

.....

Edison Senior High School
University of Minnesota Twin Cities



CRISTIAN SANCHEZ

.....

Wellstone International High School
University of Minnesota Twin Cities



EDNA SAHAL

.....

Blaine High School
University of Minnesota Twin Cities



KUE SAY

.....

Humboldt Senior High School
Bethel University

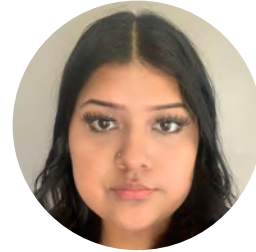
NorthStar Education Finance SCHOLARS



PAW SAY

.....

Humboldt Senior High School
Metropolitan State University



JESSICA SIMBAINA

.....

Cristo Rey Jesuit High School
St. Olaf College



VE SHAR

.....

Como Park Senior High School
Bethel University



MARINA SOULADZE

.....

Roosevelt High School
University of Minnesota Twin Cities



ANGIE SIBRI

.....

Cristo Rey Jesuit High School
University of Minnesota Twin Cities



TINO SRONVI

.....

Richfield Senior High School
Hamline University



NorthStar Education Finance SCHOLARS



ARIEL TA

.....

Irondale Senior High School
St. Catherine University



AVERY TIMMERMAN

.....

Washington Technical Magnet School
Macalester College



YASMINE TESEMA

.....

Robbinsdale Armstrong High School
Carleton College



VINCENT TUNG

.....

Como Park Senior High School
University of Minnesota Twin Cities



SEE THAO

.....

Harding High School
University of Minnesota Twin Cities



ALUXSINAH VILAI

.....

Washburn High School
Augsburg University



TIFF VU

.....

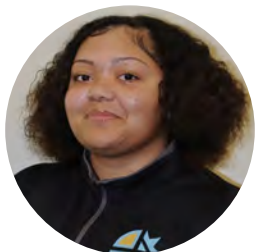
Park Center Senior High School
University of Minnesota Twin Cities



YUNA VUE

.....

Hmong College Preparatory Academy
University of Minnesota Twin Cities



MIA WHITTAKER-SHIPP

.....

Cristo Rey Jesuit High School
Augsburg University



DEVIN XIONG

.....

Harding High School
Concordia University, St. Paul



EMILY XIONG

.....

Patrick Henry High School
St. Catherine University



MAI CHUE XIONG

.....

Johnson Senior High School
University of Minnesota: Rochester

NorthStar Education Finance SCHOLARS



ELI YANG

.....

Fridley High School
Augsburg University



SHENG YANG

.....

Harding High School
St. Catherine University



KHIARA YANG

.....

Hmong College Preparatory Academy
College of St. Scholastica



YUJ XEEB YANG

.....

Spring Lake Park High School
University of Minnesota Twin Cities



ROSE YANG

.....

Johnson Senior High School
University of Minnesota Twin Cities



JENELL ZAVALETA RODRIGUEZ

.....

Cristo Rey Jesuit High School
College of St. Benedict



Piper Sandler SCHOLARS

PIPER | SANDLER

DONOR PARTNER SINCE 2014
SCHOLARS SUPPORTED: 18

.....

Piper Sandler is committed to increasing education opportunities for Black, indigenous, and people of color (BIPOC) communities, creating development and employment opportunities and access that these students might not otherwise have.

Piper Sandler Companies (NYSE: PIPR) is a leading full-service investment bank and asset management firm serving clients in the U.S and internationally. Founded in 1895, the firm is headquartered in Minneapolis with offices across the U.S. and in Aberdeen, London, and Hong Kong. Piper Sandler offers a full

suite of products to serve our clients' business lifecycle needs, geographic reach in a global market, and deep expertise in our core sectors.

Piper Sandler is among a group of donors who have joined Wallin Education Partners to sponsor scholarships and support students through their college years. Piper Sandler Scholars are selected because of their potential to be successful in college and in their chosen career. Their motivation, contributions to the community, and willingness to take rigorous classes will prepare scholars for a successful college experience.



ROBEL ABRHA

.....

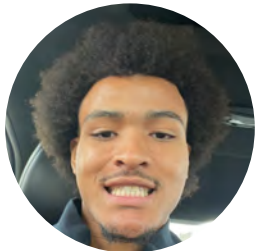
Highland Park Senior High School
Augsburg University



RYAN KELLEHER

.....

Richfield Senior High School
University of Minnesota Twin Cities



JEFF LINZY

.....

Edison Senior High School
University of Minnesota Twin Cities



KHARISMA NAIDU

.....

Richfield Senior High School
Hamline University



JAIRO RODRIGUEZ CAYETANO

.....

Como Park Senior High School
Concordia University, St. Paul



QING WANG

.....

Woodbury High School
University of Wisconsin-Madison

Randall Family SCHOLARS

We heard about the Wallin Education Partners Program through good friends who have sponsored many students through the years. I was lucky enough to have attended one of the programs at St. Kates and decided this would be a great program to help students get their college degree and be helped along the way by the tutors provided by Wallin.

My husband, Ron, (who passed away in 2013) was the first in his family to go to college. He was fortunate enough to have a four-year academic scholarship to DePauw University in Indiana and the GI bill to cover his expenses for graduate school at Dartmouth College. Our three children attended Hopkins High School and a private Minneapolis high school prior to graduating from college.

It will be an honor for the Randall family to sponsor two students for the next four years through the Wallin Education Partners Program. We will be doing our sponsorship through the Willard E. Smucker Foundation.

Donor • Carole Lee Randall

DONOR PARTNER SINCE 2019
SCHOLARS SUPPORTED: 5



BILAL ADAM

.....
Hopkins High School
Augsburg University



PRIMA BHAKTA

.....
Fridley High School
University of Minnesota Twin Cities



Robert and Ardis James Foundation SCHOLARS

DONOR PARTNER SINCE 2017
SCHOLARS SUPPORTED: 36



The Robert and Ardis James Foundation is a private foundation established in 1986 by Robert and Ardis James to focus on a broad range of charitable causes, primarily in education and the arts. Both Bob and Ardis recognize that they were extremely fortunate in their lives together and that they have a responsibility to share their good fortune with others.

The Trustees of the James Foundation are delighted to support scholars through Wallin Education Partners and believe that providing young people with educational access will allow them to realize their potential as students and as adults.



JOSH ALADETAN



Park Center Senior High School
Carleton College



APARMITA BAJRACHARYA



Central High School
University of Minnesota Twin Cities



MAYA HOLMES

.....

Hopkins High School
University of Minnesota Twin Cities



CAITLIN KHANG

.....

Brooklyn Center High School
Carleton College



HLA KHAY

.....

Como Park Senior High School
Augsburg University



LAURA MONDRAGON CHAVEZ

.....

International Academy Leap
Augsburg University



MARIANA RAMOS

.....

Hiawatha Collegiate High School
St. Olaf College



NICHOLAS REITHER

.....

Blaine High School
Milwaukee School of Engineering

Robinson Kurkowski SCHOLAR

DONOR PARTNER SINCE 2022
SCHOLARS SUPPORTED: 2

.....

Angie (Robinson) and Jim (Kurkowski) had careers as Electrical Engineers, mostly in the medical field, in the Twin Cities. They have established this scholarship to give to others the same educational advantages they have been able to give to their children. Clear inequalities in our society may be best addressed by enabling others an opportunity where there may previously have been few. They are particularly interested in supporting the STEM fields where inequalities seem to be even more pronounced and believe STEM fields would benefit from greater diversity.

They hope that their scholarship is the foundation that the recipients may some day be positioned to similarly give back to their community.

Donors • Jim and Angie Kurkowski



NASRI MOHAMED

.....

Roseville Area High School
University of Minnesota Twin Cities

Ruth and Raymond Reister SCHOLARS

DONOR PARTNER SINCE 2018
SCHOLARS SUPPORTED: 8



The Ruth A. and Raymond A. Reister Charitable Trust was established by Ruth Reister at the time of her death. Both Ruth and Ray were lawyers and held a strong belief in the value of education both for the benefit of the individual and for its importance to a free, democratic society. Ray practiced law with a major law firm in the Twin Cities and devoted a great deal of time and effort to local charitable causes. Ruth entered the legal profession at a time when it was rare for a woman to pursue a legal career. She became a champion for women in the legal profession and supported a number of educational and charitable causes. Although the Reisters did not have a family, they often provided financial support for young people to attend college. The Reister Charitable Trust is continuing the Reisters commitment to providing financial support to enable others to achieve a college education by supporting a scholar through Wallin Education Partners.



ALEXIS HERNANDEZ GUTIERREZ



Patrick Henry High School
University of Minnesota Twin Cities



DAVAUGHN LANE



John F Kennedy Senior High School
Minnesota State University Mankato

SFM Bob Lund SCHOLAR

DONOR PARTNER SINCE 2022
SCHOLARS SUPPORTED: 2

.....



SFM, headquartered in Bloomington, Minnesota, is a customer-owned mutual insurance company providing more than 30,000 employers throughout the Midwest with workers' compensation coverage. SFM insures businesses of all sizes, partnering with employers to keep workplaces safe and help injured workers recover.

In cooperation with Wallin Education Partners, SFM has created a scholarship to invest in future leaders and introduce them to rewarding careers in the insurance industry. The

Bob Lund Scholarship is named for SFM's former CEO, who is widely known for his service to the field of insurance and his continuing passion for making the world a better place.

"As is the case with many Minnesota employers, underserved communities are underrepresented in SFM's workforce, especially in leadership positions. Funding a scholarship to advance opportunities for communities that have historically faced discrimination and professional barriers, including people of color, women, LGBTQ+ individuals, and immigrants, is a meaningful way to promote diversity and inclusion and to develop a future professional workforce where people from every background have an equal opportunity to succeed."

- Bob Lund



NATALI IGUANERO ESPINOZA

.....

Hiawatha Collegiate High School
University of Wisconsin-Madison

Sit Investment Associates SCHOLAR

DONOR PARTNER SINCE 2014
SCHOLARS SUPPORTED: 6



Sit
Investment
Associates

Sit Investment Associates established the Sit Investment Associates Foundation in 1984 to support organizations involved with human services, hunger, education, health care, the arts and culture, international affairs, and our military veterans. Sit Investment Associates, one of the largest minority-owned asset management firms in the United States, was founded in 1981 by Eugene C. Sit. With only four

senior management professionals, a small support staff, and \$1 million in working capital, the firm's assets under management reached \$1 billion in just three years—an achievement due to solid returns on investment, strong ethical practices, and treasured client relationships. The company now manages assets totaling \$13 billion for institutional and individual investors, providing quality investment management expertise in domestic and international growth equities and fixed income. The Sit Investment Associates Foundation is proud to promote the mission of Wallin Education Partners to enable college and career success for high-potential Minnesota students with financial need through facilitating scholarships and providing comprehensive advising support.



ADAMINA MOUA

Brooklyn Center High School
Augsburg University

SPS Commerce SCHOLAR

DONOR PARTNER SINCE 2021
SCHOLARS SUPPORTED: 3

.....

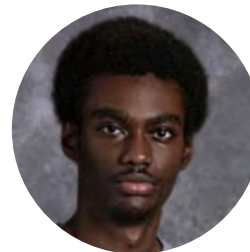


SPS Commerce is taking action to address educational inequity in Minnesota and accelerate change in our communities.

We are proud to support individuals pursuing a career in technology with their educational and career goals through the SPS Commerce Diverse Scholar Program. In addition to receiving funding to support their education, SPS Commerce

Diverse Scholars participate in our internship program, have access to mentors and are connected to a wide range of business professionals.

SPS Commerce is the world's leading retail network, connecting trading partners around the globe to optimize supply chain operations for all retail partners. We support data-driven partnerships with innovative cloud technology, customer-obsessed service and accessible experts so our customers can focus on what they do best. To date, more than 95,000 companies in retail, distribution, grocery and e-commerce have chosen SPS as their retail network. SPS is headquartered at the SPS Tower in Minneapolis.



KANANISA SERO

.....

Spring Lake Park High School
University of Minnesota Twin Cities



Star of the North SCHOLARS

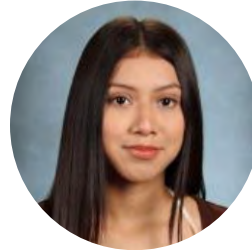
Star of the North scholars are funded from the general operating income of Wallin Education Partners, which comes from unrestricted gifts of alumni, trustees, staff, foundations, corporations, and individuals committed to helping advance the mission of Wallin Education Partners. The Star of the North Scholarship also celebrates the dedication of Wallin Education Partners staff, Alumni Association, and Trustees whose commitment to excellence and opportunity will be reflected in the lives and future contributions of these Star of the North scholars.



TEMMY AFOLABI

.....

Park Center Senior High School
Concordia College: Moorhead



BETSY AGUILAR PINEDA

.....

Hiawatha Collegiate High School
Gustavus Adolphus College



DAWN AKINSELURE

.....

Blaine High School
University of Minnesota Twin Cities



ASHAAR ALI

.....

Saint Louis Park High School
University of Minnesota Twin Cities



CHULA ALI

.....

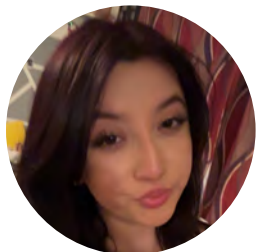
Harding High School
Augsburg University



SADAYA BRONSON

.....

North Community High School
Minneapolis College of Art and Design



YHESLY CANTOS

.....

Cristo Rey Jesuit High School
University of St. Thomas



Grace Gauden
Star of the North Scholar

Star of the North SCHOLARS



Zyaisah McCoy
Star of the North Scholar



KINGSTON DAVIES

.....

Blaine High School
Howard University



ALEJANDRO DOMINGUEZ ARAGON

.....

Cristo Rey Jesuit High School
St. John's University (MN)



GRACE GAULDEN

.....

Southwest High School
Tuskegee University



MAI KA HANG

.....

Hmong College Preparatory Academy
College of St. Benedict



MAIMUN HUSSEIN

.....

Saint Louis Park High School
University of Minnesota Twin Cities



BAYTU IBRAHIM WADAY

.....

Columbia Heights High School
University of Minnesota Twin Cities



SADIE JONES

.....

Park High School
Drake University



ABBY LANDVIK

.....

Concordia Academy
University of Wisconsin-Madison



RACHEL LARSON

.....

Washburn High School
University of Minnesota Twin Cities

Star of the North SCHOLARS



Kirubail Yenew
Star of the North Scholar



GRACE LOPEZ

.....
Convent of the Visitation School
University of St. Thomas



ZYAISAH MCCOY

.....
Highland Park Senior High School
Morgan State University



MAY MITCHELL

.....
Creative Arts High School
University of Minnesota Morris



ZAMZAM MOHAMED

.....

Blaine High School
University of Minnesota Twin Cities



MICHAEL MONTANO-AGUILAR

.....

Richfield Senior High School
University of Minnesota Twin Cities



LUCIA NITTI

.....

Mounds View High School
University of Minnesota Twin Cities



ALEXANDRA NWAMEME

.....

Blaine High School
Howard University



AMAREONA SMITH

.....

Brooklyn Center High School
Tennessee State University



HOPA STEVENS

.....

South High School
University of Minnesota Twin Cities

Star of the North SCHOLARS



Rachel Larson
Star of the North Scholar



LOLA SWEESY

.....

Spring Lake Park High School
University of Wisconsin-Madison



BAO TRAN

.....

Roseville Area High School
Augsburg University



JESSICA TRAN

.....

Mounds View High School
University of Minnesota Twin Cities



JENNY ULLAGUARI YUQUILIMA

.....

Columbia Heights High School
Hamline University



JACOB YANG

.....

Columbia Heights High School
Hamline University



AMANDA VANG

.....

Anoka High School
Augsburg University



NKAO-LAIM YANG

.....

Central High School
St. Catherine University



KENG VANG

.....

Tartan Senior High School
University of Minnesota Twin Cities



KIRUBAIL YENEW

.....

Park High School
University of Minnesota Twin Cities

Straiton SCHOLAR

DONOR PARTNER SINCE 2022
SCHOLARS SUPPORTED: 2

.....

The Straiton Scholarship is named after my great-grandfather, who was a Professor of Electrical Engineering for over 50 years. He was a pioneer in satellite communication and electro-magnetic wave theory. I am an engineer as well, having graduated from the University of Texas in 2018. and I am working as a mechanical engineer in the field of medical device design. The Straiton Scholarship is intended to help young women working toward a career in science or engineering. I hope that the recipients of this scholarship will find success in college, graduate, and use their talents to give back to the community.

Donor • Viola Holman



TEMILOLA OGUNDARE

.....

Tartan Senior High School
University of Minnesota Twin Cities



Think IT Young Professional SCHOLARS

DONOR PARTNER SINCE 2015
SCHOLARS SUPPORTED: 40

.....



Think IT is a professional development association offered by York Solutions for IT professionals that brings a diverse set of minds together to discuss common technology challenges across industries. The overall mission of Think IT is to foster professional growth and development through the power of networking and collaboration. Most groups meet monthly

in an informal, roundtable format with a different member from the group facilitating each session. Through the Think IT Association, members also can participate in our other programs. Being a member of Think IT allows them to be involved in the Link to Leadership and the Amazing Leadership Programs. These are leadership development programs that directly benefit Genesys Works, a community partner of Wallin Education Partners.

Scholarships through Wallin Education Partners are awarded to Genesys Works students pursuing degrees in the IT field.



FARTUN AWALE

.....

Al Amal School
University of Minnesota Twin Cities



KOWTHER HASHI

.....

Eden Prairie High School
University of Minnesota Twin Cities



LINH NGUYEN

.....

John F Kennedy Senior High School
University of Minnesota Twin Cities



ABDIKARIN MOHAMED

.....

Washington Technical Magnet School
University of Minnesota Twin Cities



AMIRA OSMAN

.....

Irondale Senior High School
University of Minnesota Twin Cities

U.S. Bank SCHOLARS

DONOR PARTNER SINCE 2015
SCHOLARS SUPPORTED: 71

.....



At U.S. Bank, our Corporate Social Responsibility work is built on a foundation of ethics, integrity, and trust and highlights our commitment to economic development in the communities we serve. Our commitment to CSR comes to life through Community Possible, our corporate giving and engagement platform that closes the gap between people and possibility in the areas of Work, Home, and Play.

We know that a flourishing small business environment and

an educated workforce contribute to strong communities. That's why we invest in and support programs and organizations that help small businesses thrive, provide pathways to higher education, help people succeed in the workforce, and gain greater financial literacy.

Our employees affect real change. We commit to one another, our communities, and our company, empowered to do good through time off to volunteer, channels for sharing our innovative ideas, programs that help us chart our careers and meet mentors, and much more.

We are committed to ethics and quality, and we know that developing communities means investing in people and financial futures. We are proud to support Wallin Education Partners and help high-achieving, diverse students in the Twin Cities dream big, and strengthen their financial futures.

In our U.S. Bank spirit of actively developing, strengthening, and energizing the communities where we live and work, we hope all Wallin Education Partners Scholars embrace the vast educational opportunities that are in front of them, reach out to mentors who will guide them in their educational pursuits and,

most importantly, use their college experiences to improve the lives of others.

We are proud to work alongside Wallin Education Partners Scholars at U.S. Bank and support them in beginning a meaningful career.



NESTEHO ABDI

.....

Southwest High School
St. Catherine University



DHRUV BHINDE

.....

Mounds View High School
University of St. Thomas



TROY CLEATON

.....

Johnson Senior High School
Xavier University of Louisiana



RISKO GALATA

.....

Spring Lake Park High School
University of Minnesota Twin Cities



GAY LER HTOO

.....

Como Park Senior High School
Augsburg University

U.S Bank SCHOLARS



CHANELLE KLATT

.....

Brooklyn Center High School
Macalester College



KAYVON RAZA

.....

Champlin Park High School
University of Minnesota Twin Cities



NOAH MATSUURA

.....

Blaine High School
University of St. Thomas



SELENA SOTAMBA

.....

South High School
University of Minnesota Twin Cities



SAVIA MOUA

.....

Hmong College Preparatory Academy
University of Minnesota Twin Cities



KA YENG YANG

.....

Tartan Senior High School
St. Olaf College



Wallin Foundation SCHOLARS



DONOR PARTNER SINCE 1992
SCHOLARS SUPPORTED: 2894



Founded in 1992, Winston (Win) and Maxine Wallin initially started funding four-year college scholarships at Minneapolis South High School, Mr. Wallin's alma mater. They expanded the Program to all Minneapolis public high schools in 2000. St. Paul public schools were included in 2006, with Anoka-Hennepin high schools next in 2007. Over the years, other very generous Donor Partners have joined the Education Partners to offer their own named scholarships. The Program has grown significantly in recent years, with the Wallin Education Partners (WEP) now helping support students at 69 high schools. The intention of the Program is to educate young people in our community who

are hard-working and ambitious and in search of better futures. The extremely high graduation rates of the Program (above 90 percent) are what sets WEP apart. To date, thousands of our students have gone on to lead successful lives after achieving their college degrees.

Both Win and Maxine benefited from college scholarships themselves. Win grew up in South Minneapolis and went onto a successful business career at both Pillsbury and Medtronic. Maxine is from Duluth and was able to attend both Macalester and the University of Minnesota (eventually becoming a

librarian). They both believe strongly in the power of education to change lives for the better. They are both honored to be in the enviable position (and Mr. Wallin would say lucky enough) to be able to give back to the community and offer these scholarships and related student support services.

Although Mrs. Wallin passed away in April this year (and Mr. Wallin in 2010), the legacy he and his wife established long ago lives on. Their son Bradford continues to be a member of the Board (since this Program began). Recently, Brooks and Brad Wallin both personally took an additional 4 Year Scholar. Lance Wallin also stepped forward to sponsor a 2-Year Scholar in 2023. The Wallin family welcomes all interested new donors to consider joining this scholarship program effort. Wallin Scholars have gone forth to excel in their undergraduate and graduate studies and to become strong contributing members (and leaders) in our society. We look forward to celebrating your accomplishments with you as you begin your college experience. We have “Great Expectations” for you on this journey. Congratulations!





Wallin Foundation SCHOLARS



PUNA EKKA

.....

Brad and Cyndy Wallin Scholar
Irondale Senior High School
University of Minnesota Twin Cities



EMILY XIONG

.....

Brooks Wallin Family Scholar
Osseo High School
St. Catherine University

Wallin Foundation SCHOLARS



FARDOWSA ABDI

.....

Burnsville Senior High School
University of Minnesota Twin Cities



MIRKENI AHMED

.....

Fridley High School
University of St. Thomas



FATIMA ABUKAR

.....

Burnsville Senior High School
Augsburg University



JOSEPH BALLARD

.....

Alternative Learning Center
at Gordon Parks High School
Minneapolis College of Art and Design



HEERA ADHIKARI

.....

Roseville Area High School
University of Minnesota Twin Cities



MAHLATE BELETE

.....

Roseville Area High School
University of Minnesota Twin Cities



LIZZY BLAKEY

.....

North High School
University of Wisconsin-Madison



THOMAS COOMBE

.....

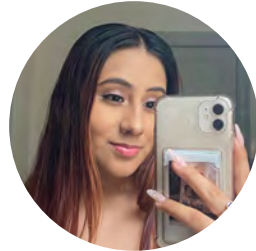
Anoka High School
Bethel University



LILLEE BUECHLER

.....

Roosevelt High School
Augsburg University



LINETTE CORTEZ JIMENEZ

.....

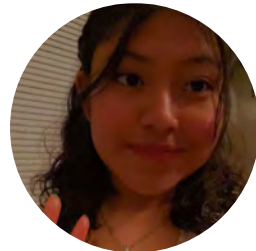
Hiawatha Collegiate High School
St. Olaf College



SOAHCHEHT CHHUON

.....

Blaine High School
University of Minnesota Twin Cities



JENNI CRUS CISNEROS

.....

Cristo Rey Jesuit High School
College of St. Benedict

Wallin Foundation SCHOLARS



JEFFERSON CUNIN MIZHQIRI

.....

Cristo Rey Jesuit High School
Macalester College



TENZIN GHONGMA

.....

Irondale Senior High School
University of Minnesota Twin Cities



MAKDA DANIEL

.....

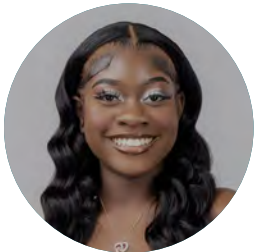
Tartan Senior High School
Augsburg University



RAYAN HASSAN

.....

Blaine High School
University of Minnesota Twin Cities



WILETHA DAVIES

.....

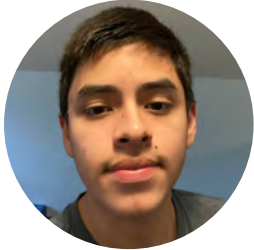
Coon Rapids High School
North Dakota State University



PETER HER

.....

Johnson Senior High School
University of Minnesota Twin Cities



ERICK HERNANDEZ

.....

Community Of Peace Academy
University of Minnesota Twin Cities



JASMINE JARA LAZO

.....

De La Salle High School
University of Minnesota Twin Cities



VAL HERNANDEZ

.....

Blaine High School
University of Minnesota Morris



JACKIE LARSEN

.....

Thomas Jefferson Senior High School
Bemidji State University



SYDNEY HOLM

.....

Park High School
Minnesota State University Moorhead



RACHEL LONGLEY

.....

Osseo High School
University of Minnesota Twin Cities

Wallin Foundation SCHOLARS



ANDY LOR

.....

Fridley High School
Augsburg University



BRYCE MARTIN

.....

Saint Louis Park High School
University of North Dakota



AKIM LUCHELO

.....

Wellstone International High School
University of Minnesota Twin Cities



ANDY MERA

.....

Richfield Senior High School
Concordia College: Moorhead



Wallin Foundation SCHOLARS



MUBARAK MOHAMED

.....

South High School
Augsburg University



PAW MOO

.....

Como Park Senior High School
Bethel University



ISMAEL MOHAMUD

.....

Fridley High School
University of Minnesota Twin Cities



AALIYA MUSE

.....

Ubah Medical Academy
University of Minnesota Twin Cities



MUKTAR MOHAMUD

.....

Heritage Academy of Science
and Technology
University of Minnesota Twin Cities



DORA NAUGHTON

.....

Washburn High School
St. Olaf College



FAREEDAH OYESOLA

.....

Johnson Senior High School
Saint Mary's University of Minnesota



AMAL RASHID

.....

Robbinsdale Armstrong High School
University of Minnesota Twin Cities



MI PAW PAW

.....

Open World Learning Community
St. Olaf College



DANIELA SARMIENTO

.....

Burnsville Senior High School
Hamline University



SOPHIE PROULX

.....

Richfield Senior High School
College of St. Benedict



LENG THAO

.....

Central High School
University of Minnesota Twin Cities

Wallin Foundation SCHOLARS



PAKOU THAO

.....

Washington Technical Magnet School
St. Catherine University



CHRIS VARGHESE

.....

Coon Rapids High School
University of Minnesota Twin Cities



TIN TRAN

.....

Irondale Senior High School
University of Minnesota Twin Cities



CHLOE VOSS

.....

Andover High School
Northern State University



CONNOR UECKER

.....

North High School
Minneapolis College of Art and Design



FRANKLIN WOHNOUTKA

.....

Roosevelt High School
Drake University



CINDY XIONG

.....

Blaine High School
University of Minnesota Twin Cities



ANNA YANG

.....

Park Center Senior High School
University of Minnesota Twin Cities



JOEL ZAMORA-AGUILON

.....

Tartan Senior High School
University of Minnesota Twin Cities



Fareedah Oyesola
Wallin Foundation Scholar

Well-Being of All Foundation SCHOLAR

DONOR PARTNER SINCE 2018
SCHOLARS SUPPORTED: 7

.....

Kathleen Blatz and Greg Page are honored to be donor partners with Wallin Education Partners. Greg and Kathleen have supported students and education in the Twin Cities and beyond for over 30 years. Kathleen and Greg are committed to giving back to this community and creating a strong workforce within it. They hope to provide valuable educational opportunities to as many young people as possible. Kathleen and Greg want to see students from all socioeconomic backgrounds be successful in their lives and find sustainable and fulfilling careers. They have confidence that Wallin Education Partners will help to make this happen for the students whom they provide scholarships and mentorship.

Donors • Kathleen Blatz and Greg Page



ISLAEA ANDERSON

.....

Johnson Senior High School
Johnson C. Smith University

Woodruff SCHOLAR

DONOR PARTNER SINCE 2023
SCHOLARS SUPPORTED: 1

.....

We believe that everyone qualified for higher education should have the opportunity to pursue their dreams. Education opens so many doors and positions one for further growth. Personally, we were fortunate enough to attend college when it was so much more affordable. Even though we went down very different paths, we both ended up with IT careers. For Barb, college was imperative after watching her mother struggle to support her family. For both her mother's benefit, but also the benefit of the larger community, MN paid her tuition and she became self-sufficient. Given the high costs of higher ed and not nearly enough government assistance, we want to give back some of what we have gained from our educations. We are excited to sponsor our first scholar, especially one who has articulated such a clear vision for herself!

Donors • Barb and Robert Woodruff



DHEQA MOUSSA

.....

Irondale Senior High School
University of Minnesota Twin Cities



Thank You

