



WALLIN
EDUCATION PARTNERS

— Class of —
2021



WELCOME CLASS OF 2021!

You are graduating from high school and starting college at an extraordinary time. Despite the challenges presented by a global pandemic and the widespread disruption of many things in our world, you persevered. We are thrilled to welcome you to the Wallin Education Partners family. Let me share a bit of the history of the founding family and the enduring mark of Win and Maxine Wallin on our program.

Maxine and Win Wallin began a scholarship program in 1992 to help students with financial need go to college and earn a degree. As a businessman and civic leader, Win recognized that a thriving economy depends on a skilled, diverse workforce. He believed that equal access to higher education is essential in our society. This singular focus is as important today as it was almost 30 years ago.

The Wallin family is joined by many other individual, family, corporate, and foundation donors whose generosity makes our scholarships possible. I want to especially thank Taige Thornton and NorthStar Education Finance. NorthStar has stepped forward in unprecedented ways both through scholarships and capacity-building grants. NorthStar's support has enabled us to enhance our program to serve students who choose to attend community college. With the class of 2021, there will be 559 scholars supported by NorthStar attending two-year and four-year institutions.

We strongly believe that each of you is ready for college and this new and very exciting step. Take pride in your accomplishments and embrace all that you are about to experience. Be sure to

thank your family, friends, and many teachers, counselors, administrators, and mentors who have played an important role in helping prepare you for the journey ahead. We look forward to working closely with you to ensure that your college experience is rich and meaningful and leads to a fulfilling career. Our trustees, staff, and donor partners will be cheering you on.

Congratulations and once again, welcome to the Wallin Education Partners family!

Susan Basil King
President and CEO

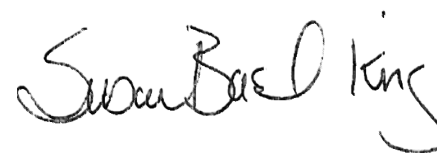




TABLE OF CONTENTS

Chuck Denny Award.....	6	Federated Insurance Scholar.....	40	NorthStar Education Finance Scholars.....	70
3M Scholars.....	8	Flaherty Family Foundation Scholar.....	42	O’Keefe Scholar.....	97
Andersen Corporation Scholars.....	10	Frank & Elaine Lang Family Scholars.....	44	Piper Sandler Scholars.....	98
Archibald Bush Scholars.....	12	Friends of Jasper Lake Scholar.....	45	Radia Scholar.....	100
Bachman Scholar.....	16	Geiwitz Scholar.....	46	Randall Family Scholar.....	101
Bieber Family Foundation Scholar.....	17	G. Robert Strauss Jr. Scholar.....	47	Richard F. McNamara Scholar.....	102
Black Men Teach Scholar.....	18	Halverson Scholar.....	48	Robert & Ardis James Foundation Scholars..	103
Boston Scientific Scholars.....	20	Helen Meyer Scholar.....	49	Ruth & Raymond Reister Scholar.....	104
Bright Beacon Collective Scholar.....	21	Holman Scholars.....	50	Schulze Family Foundation Scholars.....	105
Brown Family Scholars.....	22	Hyland Scholar.....	52	Sit Investment Scholar.....	106
Burnett Scholar.....	23	Jackson Scholars.....	53	SPS Commerce Scholar.....	107
C.H. Robinson Scholar.....	24	Jennifer Novak Scholar.....	54	Star of the North Scholars.....	108
Christensen Family Scholar.....	25	Kady Hexum Scholar.....	55	Thies Family Scholars.....	111
Cornwall Scholars.....	26	Keller Family Foundation Scholar.....	56	Think IT Young Professional Scholars.....	112
Cornwell Scholars.....	28	Kirwin Scholar.....	58	THS Scholar.....	114
David Koehser & Nancy Dunnigan Scholar.....	30	Marie Rothschild Scholar.....	59	Toles Family Scholar.....	115
Diane & Darryl Sannes Scholar.....	31	Maybloom-Suzukamo Scholars.....	60	True North Scholar.....	117
Dixon Scholar.....	32	McDonagh-Sullivan Scholar.....	62	U.S. Bank Scholars.....	118
Donaldson Scholar.....	33	Medtronic Scholars.....	64	Wallin Foundation Scholars.....	122
Enterprise Scholars.....	34	Minnesota Opportunity Scholars.....	66	WCA Foundation Scholar.....	136
Esther Johnson Scholar.....	36	Nellie Griswold Francis & William T. Francis.....	68	Well-Being of All Foundation Scholar.....	137
Ettinger Scholars.....	38				



Chuck Denny AWARD



Chuck Denny was a successful businessman, community leader, and philanthropist. Wallin Education Partners was the lucky recipient of his leadership and vision. At his memorial service in November 2019, Chuck was remembered for his statesmanship and innumerable contributions to Minnesota. As Chairman of the Board of Wallin Education Partners at a critical point in our history, Chuck's clarity of purpose, integrity, and kindness left an indelible mark on the organization. Established in 2016, the Chuck Denny Award is given annually to Wallin Scholars who are continuing their education in graduate school and who, through their involvement and commitment to our community during college, have demonstrated a commitment to civic engagement and public service.



SUMAYA ALFATH

.....

Sumaya Alfath graduated with honors from the University of Minnesota this spring. Sumaya began her studies at the Carlson School of Management but later transferred to the College of Liberal Arts, declared a Global Studies major, and considered the impact she wanted to make in local and global settings. Sumaya declared an additional major in Political Science and developed a strong interest in public health, specifically epidemiology. Sumaya also works hard outside the classroom. Through roles at UNICEF, the Minnesota Department of Health, and informational interviews, she identified and confirmed her direction. Sumaya will begin graduate school at the University of Minnesota School of Public Health in the fall. Sumaya has always been grounded by her identities, her heart, her family, and her care for local and global communities. Wallin Education Partners is pleased to select Sumaya Alfath as the recipient of the Chuck Denny Award in 2021. Congratulations Sumaya!

3M SCHOLARS

DONOR PARTNER SINCE 2009
SCHOLARS SUPPORTED: 67



3Mgives has partnered with Wallin Education Partners since 2009 to offer college scholarships and professional advising services to students who are furthering their education in science, technology, engineering, or business.

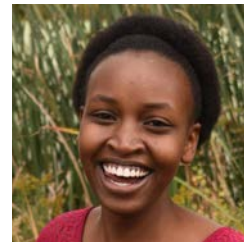
3M has helped to improve lives through innovative products and solutions as well as investments in our communities around the world. Since 1953, 3M has donated nearly \$1.6 billion in cash and in-kind gifts to education and nonprofit organizations. 3Mgives has partnered with the St. Paul Public School District for over 40 years to help students achieve, graduate, and be ready for postsecondary education.



DULCE CHAUTLA SUASTEGUI



Open World Learning
St. Olaf College



CHRISTELLE IRANEZEREZA



Como Park High School
Bethel University



LET LET

.....

Humboldt High School
University of Minnesota - Twin Cities



REDEAT WATTERO

.....

Highland Park High School
University of Minnesota - Twin Cities



Andersen Corporation SCHOLARS



DONOR PARTNER SINCE 2017
SCHOLARS SUPPORTED: 10

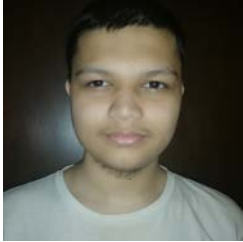
.....

Andersen was founded in 1903 on the philosophy of working “all together” to deliver on its promise to its customers. Andersen delivers products for the way people live, unmatched performance for the comfort and security homeowners desire, and endless design options to achieve any style.

Headquartered in Bayport, Minnesota, Andersen Corporation and its

subsidiaries manufacture and market window and door products under the Andersen®, Renewal by Andersen®, EMCO®, Weiland®, MQ™, and Heritage™ brands. Andersen, a privately held company with more than 10,000 employees, operates manufacturing sites across North America and Europe. Andersen has earned the U.S. Environmental Protection Agency’s 2021 ENERGY STAR® Partner of the Year –

Sustained Excellence Award. Visit us at andersenwindows.com. Follow us on Facebook @AndersenWindows, Twitter @AndersenWindows, and Instagram @andersen_windows.



MILAN CHAPAGAI

.....
Roseville Area High School
University of Minnesota - Twin Cities



GEORGE YANG

.....
Brooklyn Center High School
St. Olaf College



Archibald Bush SCHOLARS



**BUSH
FOUNDATION**

**DONOR PARTNER SINCE 2018
SCHOLARS SUPPORTED: 56**



The Bush Foundation invests in great ideas and the people who power them across Minnesota, North Dakota, South Dakota, and the 23 Native nations that share the same geography. We work to inspire and support creative problem solving—within and across sectors—to make our region better for everyone. The Foundation was established in 1953 by Archibald Bush and his wife, Edyth, and has since invested over \$1 billion in grants to thousands of organizations and individuals who think bigger and think differently about solutions to problems in their communities. The Archibald Bush Scholarship is given in honor of Archie Bush and his lifelong commitment to St. Paul and Granite Falls.

A Granite Falls native, Archie joined Minnesota Mining and Manufacturing (3M) as a bookkeeper in 1909 and rose through the ranks to become the chair of the executive committee. He and his wife, Edyth, established the Bush Foundation in St. Paul to fund a range of programs and purposes. Today, the Bush Foundation remains committed to doing the most possible good with the resources Archie and Edyth left to the community.



GEBERELWA ANIMUT

.....

Humboldt High School
University of Minnesota - Twin Cities



YAJAIRA FLEMING

.....

Central High School
Howard University



MU EH

.....

Harding High School
St. Catherine University



OSCAR GALVAN

.....

Yellow Medicine East High School
North Dakota State University



COLE FISCHER

.....

Yellow Medicine East High School
Mayville State University



TOU MOUA

.....

Johnson High School
Minneapolis College of Art and Design

Archibald Bush SCHOLARS



ASHLEY NIEMEYER

.....

Yellow Medicine East High School
Southwest Minnesota State University



SANDRA WILLIAMS

.....

Creative Arts Secondary School
University of Minnesota - Rochester



TYLER NORDAUNE

.....

Yellow Medicine East High School
University of South Dakota



A LEE XIONG

.....

Washington Technology Magnet School
University of Minnesota - Twin Cities



NAG POE

.....

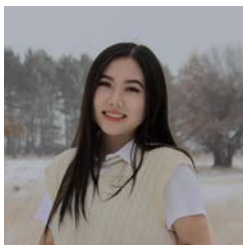
Como Park Senior High School
St. Catherine University



PAO XIONG

.....

Washington Technology Magnet School
University of Minnesota - Twin Cities



KAO NOU YANG

.....

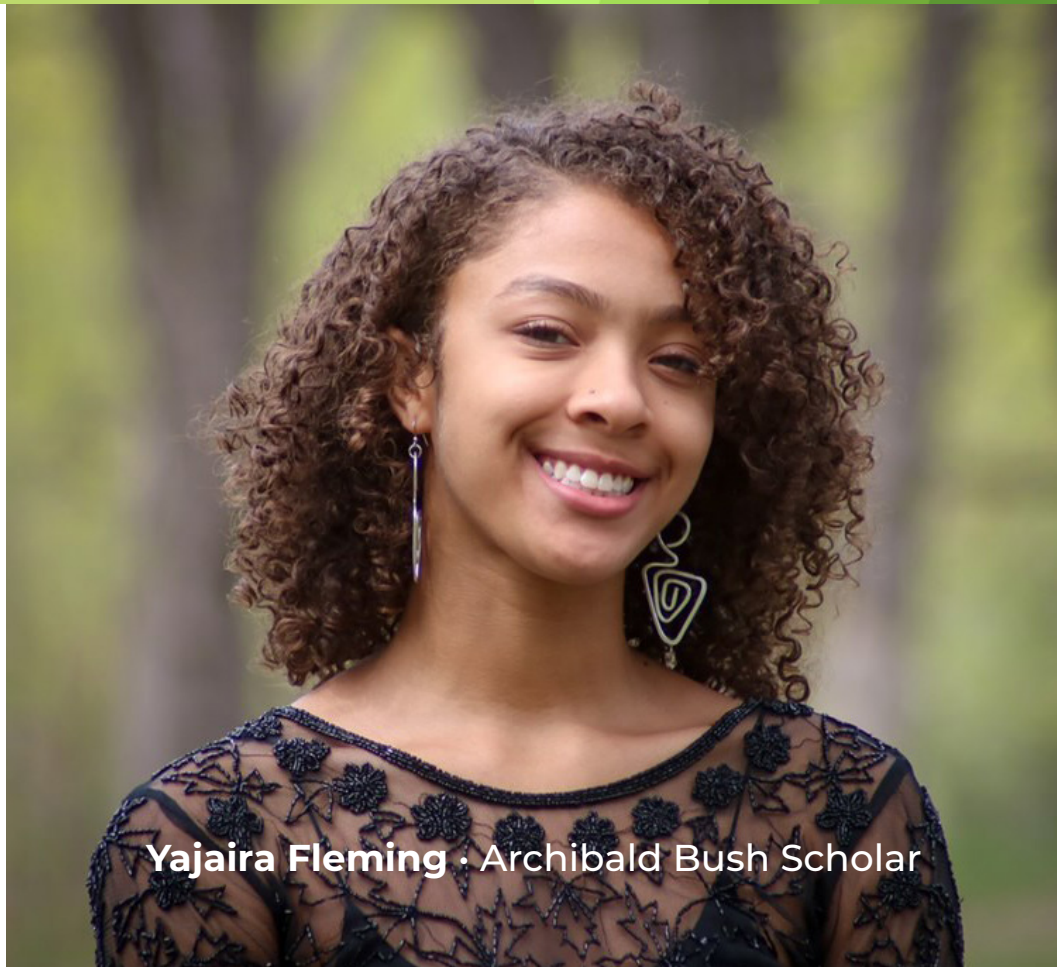
Johnson High School
Concordia University - St. Paul



MOLLY YANG

.....

Open World Learning
University of Minnesota - Twin Cities



Yajaira Fleming · Archibald Bush Scholar

Bachman SCHOLAR

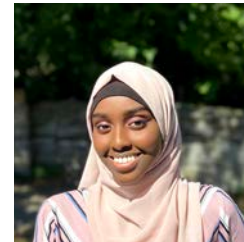
DONOR PARTNER SINCE 2021
SCHOLARS SUPPORTED: 1

.....

Over the last few years, it has become so obvious that the gap between the haves and the have-nots just continues to grow. Too many kids who have the ability to go to college are being left behind simply because the cost of an education has become too burdensome. When we learned about Wallin Education Partners it just struck a chord for us and we wanted to be a part of this wonderful mission.

A college education certainly enhances the chances for a successful career, but just as importantly, those four years that young people spend interacting with other college students and planning for their future are invaluable. If a first-generation college graduate can yield a second generation of college graduates, we can really start to imagine all the wonderful possibilities.

As graduates of Richfield High School and Minneapolis West High School, we are excited to support Alia in her postsecondary journey. We have every confidence that she will be very successful.



ALIA MOHAMED

.....

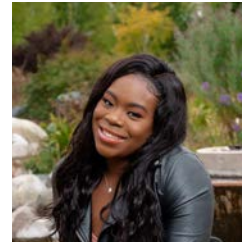
Richfield High School
University of Minnesota - Twin Cities

Bieber Family Foundation SCHOLAR

DONOR PARTNER SINCE 2017
SCHOLARS SUPPORTED: 2

.....

The Bieber Family Foundation feels very fortunate to be able to support the mission of Wallin Education Partners. This work is very important in the lives of students and for the community. We are proud to support scholars on their paths toward achieving their education and meaningful careers. Your motivation, contributions to our community, and potential to achieve great things are inspiring. We stand behind you and are continually rooting for your success.



SEMERIA DOE

.....

Totino-Grace High School
University of Minnesota - Twin Cities

Black Men Teach SCHOLAR

DONOR PARTNER SINCE 2021
SCHOLARS SUPPORTED: 1



BLACK MEN TEACH TWIN CITIES

The mission of Black Men Teach is to recruit, prepare, place, and retain Black male teachers in Twin Cities elementary schools. At present, less than one percent of teachers in these schools are Black men. Yet research shows that a Black male student who has one Black male teacher in elementary school is 29 percent less likely to drop out. And with two Black teachers, he is 32 percent more likely to pursue postsecondary education.

Black Men Teach partners with multiple stakeholders to create viable pathways to the classroom, individually designed for each of our Fellows. Critical to this pathway are scholarship opportunities to make college affordable. Black Men Teach

relies on Wallin Education Partners because of its strong track record of supporting its scholars and their high graduation rates.

Paul and Beth Gunderson are honored to support Black Men Teach Wallin Scholars.



JOHN COLLINS JR.



North Community High School
University of Jamestown



Boston Scientific SCHOLARS

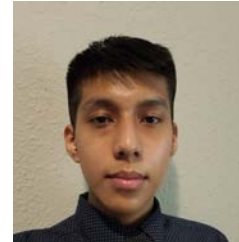
DONOR PARTNER SINCE 2013
SCHOLARS SUPPORTED: 18



.....

Boston Scientific transforms lives through innovative medical solutions that improve the health of patients around the world. As a global medical technology leader for more than 35 years, we advance science for life by providing a broad range of high-performance solutions that address unmet patient needs and reduce the cost of healthcare.

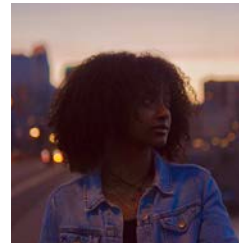
Our Boston Scientific Scholars receive funding for their education, but our commitment goes far deeper. Participants in the program—who represent some of the most critically needed demographics in science and healthcare—gain access to internships, leadership and development opportunities, and the ability to participate in the company’s Employee Resource Groups. In doing so, Boston Scientific is investing in our future employees, future physicians, and future thinkers who will harness the powers of science to benefit humankind.



JOSEPH CRUZ-GUZMAN

.....

Cristo Rey Jesuit High School
Marquette University



BILESE DINSA

.....

Central High School
University of Minnesota -
Twin Cities

Bright Beacon Collective SCHOLAR

DONOR PARTNER SINCE 2020
SCHOLARS SUPPORTED: 2

.....



In the wake of George Floyd's killing, Bright Beacon Collective was formed by a group of University of Minnesota alumni and friends. We came together with a shared belief that equity in education is a necessary step toward dismantling systemic racism. Bright Beacon Collective is excited to work with Wallin Education Partners to support another scholar in achieving their academic and career goals.



SOFIA JACKSON

.....

Central High School
University of Minnesota - Twin Cities

Brown Family SCHOLARS

DONOR PARTNER SINCE 2021
SCHOLARS SUPPORTED: 2



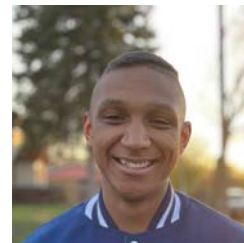
Alisa and Dan Brown established the Brown Family Scholarship as their first step in implementing real, meaningful change. They sent their children to school and felt they could do the same for others. They realize there are inequities in our society and believe supporting the attainment of a college education is a real stepping stone to advancement and equality. It is their hope that the Brown Family Scholarship provides real meaning to their recipients and helps create a platform of success for themselves and their families.



ALEJANDRO ANDERSON



North Community High School
University of Minnesota - Twin Cities



ELISHA JACKSON JR.



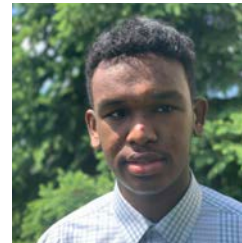
North Community High School
Augsburg University

Burnett SCHOLAR

DONOR PARTNER SINCE 2019
SCHOLARS SUPPORTED: 2

.....

Michael and Susan Burnett believe that a sound liberal arts education prepares young people for fulfilling and productive lives. Likewise, they believe that Minnesota is blessed with a well-educated population that also holds the values of hard work, honesty, support for the arts, appreciation for nature, and volunteering for the benefit of the community. Thus, they are pleased to provide this scholarship to someone who exhibits promise and will further enrich their region as a productive member of our community.



SALMAAN HUSSEIN

.....

Burnsville High School
University of Minnesota - Twin Cities

C.H. Robinson SCHOLAR

DONOR PARTNER SINCE 2019
SCHOLARS SUPPORTED: 3

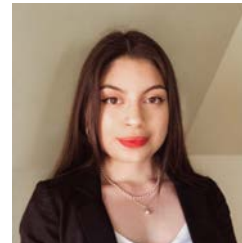


C.H. ROBINSON

C.H. Robinson is one of the world's largest logistic platforms. We solve logistics problems for companies across the globe by providing a suite of services to seamlessly deliver the products and goods that drive the world's economy. With the combination of our multimodal transportation management system and expertise, we use our information advantage to deliver smarter solutions for our nearly 200,000 customers and contract carriers.

At C.H. Robinson we are committed to removing barriers and creating a culture of belonging that embraces unique experiences and diverse backgrounds—both within the

company and the community. Building on our long history of supporting communities, the C.H. Robinson Foundation has donated \$32 million to nonprofits since 2005. Our Twin Cities area grants are focused on supporting individuals' basic needs in the areas of education, hunger, and shelter. We are proud to support Wallin Education Partners and further their mission to create a diverse community of educated community members needed to build a stronger tomorrow.



ERIKA PATINO

.....

Southwest High School
University of Minnesota - Twin Cities

Christensen Family SCHOLAR

DONOR PARTNER SINCE 2016
SCHOLARS SUPPORTED: 3



In 2021, we are humbled and honored to be sponsoring our third scholar. In deciding how we could make the biggest impact to individual lives and the community, we thought, and now strongly believe, that supporting a Wallin Scholar provides immeasurable returns. Currently, we are watching our own four children pursue their educations and interests, and have been fortunate to be able to guide them and provide financial support in this pursuit. We want to go beyond our own doorstep. We want to make a difference in an intelligent, ambitious, and driven student's pursuit of their own education, to help provide access to the resources to make their college education a reality, and to be one stepping stone in helping them achieve their dreams. In our own careers, we have seen the possibilities that can be realized when combining a solid education with the pursuit of passions. We want to make this world a better place, and that starts with giving educational opportunities to well-deserving people, like Wallin Scholars.



MODOU DIBBA



Columbia Heights High School
University of Minnesota - Twin Cities

Cornwall SCHOLARS

DONOR PARTNER SINCE 2013
SCHOLARS SUPPORTED: 31

.....

Mary Ann and Looe Baker III are among a group of donors who have joined with Wallin Education Partners to sponsor scholarships and support students through their college years. The Bakers believe that education is critical for success in the workplace, and are proud to provide you with the help of a scholarship. The Bakers selected you as a Cornwall Scholar because of your potential to be successful in college and in your career. They believe your motivation, contributions to our community, and potential to achieve great things are inspiring. They stand behind you and are continually rooting for your success.



VIRGINIA BUNAY

.....

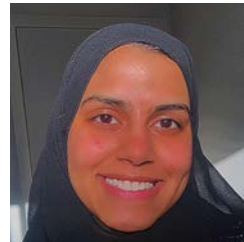
DeLaSalle High School
St. Catherine University



ANNA GIESE

.....

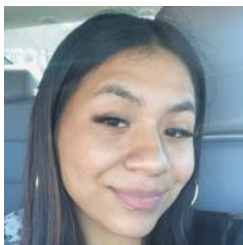
Coon Rapids High School
Winona State University



SADIA KHYBER

.....

Richfield High School
University of Minnesota - Twin Cities



SANDRA MORA

.....

Hiawatha Collegiate High School
Luther College



MICHAEL UDE

.....

Fridley High School
University of Minnesota - Twin Cities



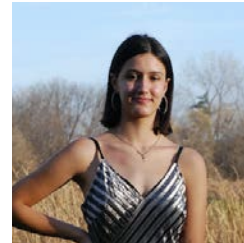
Cornwell SCHOLARS

DONOR PARTNER SINCE 2002
SCHOLARS SUPPORTED: 165



In 2002, we awarded our first Cornwell Scholarships. Since then, we have had the greatest pleasure from seeing our students attend college, graduate, and go out in this world bringing their unique talents and their education to get good jobs and to give back to our community.

We care deeply about this community and its future. There are so many young people with great potential who need a little support to help them achieve their goals. It has been such a pleasure for us to get to know students from a wide range of diverse backgrounds. We see their determination and motivation to do well in school so that they can get fulfilling jobs and have a positive impact on our community. It is a blessing for us to know and help these young scholars.



MARIA BENITO



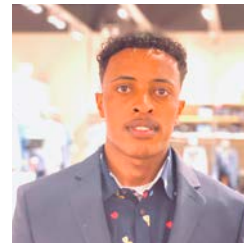
Southwest High School
Macalester College



CASSANDRA GARCIA RIOS



South High School
University of Minnesota - Twin Cities



ABREHAM GETACHEW



South High School
University of Minnesota - Twin Cities



JACY LANDI

.....

Washburn High School
Macalester College



TER YANG

.....

Patrick Henry High School
University of Minnesota - Twin Cities



LAYANED SANISACA SIMBANA

.....

Edison High School
University of Minnesota - Twin Cities



ELIJAH TAYLOR

.....

Roosevelt High School
University of Wisconsin - Stout

David Koehser and Nancy Dunnigan SCHOLAR

DONOR PARTNER SINCE 2021
SCHOLARS SUPPORTED: 1



A college degree undeniably carries with it a financial benefit, but there are additional, if not greater benefits, in the opportunity for new experiences and the exposure to new ideas and new fields of study. Higher education provides a foundation for lifelong learning, for always asking questions and seeking answers, and for getting the most out of life. We are happy to be able to assist a student in realizing all that college has to offer, both for the present and for a lifetime.



KRISTIN VO



Blaine High School
University of Minnesota - Twin Cities

Diane and Darryl Sannes SCHOLAR

DONOR PARTNER SINCE 2021
SCHOLARS SUPPORTED: 1

.....

Diane and Darryl Sannes, both retired Medtronic employees, worked there during Win Wallin's time as CEO. Both were impressed by his vision, leadership skills, approachability, and his giving back to the community. They were aware of the Wallin Education Partners Scholarship Program and in 2021 decided to become Donor Partners.

Diane and Darryl, both took the long road to college degrees, working full- and part-time to finance their education. With this, they missed out on the full college experience.

They volunteer with local schools and want to do more, helping graduates further their education and have a full college experience. Using their good fortune as Medtronic employees, Diane and Darryl would like to help local high school graduates achieve their educational goals and make it possible to have a rewarding and successful career.



MINH TONG

.....

Park Center High School
University of Minnesota - Twin Cities

Dixon SCHOLAR

DONOR PARTNER SINCE 2013
SCHOLARS SUPPORTED: 8



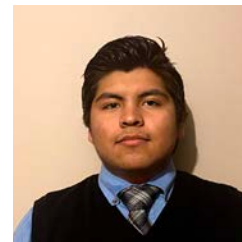
George H. Dixon and Marjorie “Peggy” Dixon moved to Minnesota in 1968 when George became President of the First National Bank of Minneapolis. Both immediately became involved in the larger community. Peggy and George served on many nonprofit boards. George was a director of a number of public companies and a Trustee of Carleton College for 25 years and Board Chair for five. He served as Deputy Secretary of the Treasury in the Ford Administration and returned to Minnesota to head First Bank System, a predecessor of US Bank.

Both George and Peggy were intellectually curious and personally adventuresome. Peggy had grown up sailing in Rhode Island, and after George’s retirement they had a sailboat built in England, and they and their children sailed it across the Atlantic to the Caribbean. Peggy was an accomplished gardener. George raised bees for 60 years and read widely,

including physics and astronomy. They were extremely generous people as well.

George chaired the search committee that brought Steve Lewis to Carleton as President in 1987. The Dixons were good friends and strong supporters of Steve and Judy Lewis at Carleton. The Lewises, whose parents believed in the importance of education, established this scholarship in their honor.

The Dixon Scholarship is in its sixth year of being awarded. Through the Lewises’ generosity, the new Dixon scholar joins five Dixon scholars and two Lewis-Frost scholars.



YONY PACHECO LOPEZ



Cristo Rey Jesuit High School
Saint John’s University

Donaldson SCHOLAR

DONOR PARTNER SINCE 2017
SCHOLARS SUPPORTED: 4

.....



Donaldson Company Inc. (NYSE: DCI), is a global leader in the filtration industry with sales, manufacturing, and distribution locations around the world. Donaldson’s innovative filtration technologies are designed to solve complex filtration challenges and enhance customers’ equipment performance.

Founded in 1966, the Donaldson Foundation strives to make a meaningful impact in our communities. We proudly

support programs and organizations that direct time and effort toward education. Program grants provided by the Donaldson Foundation impact a broad range of educational interests in our communities, including early childhood development, K–12, postsecondary, adult learner, and self-sufficiency education.

“Donaldson wants all children to see themselves in STEM,” said Allie Boyat, President of the Donaldson Foundation. “Education is the primary focus of the Donaldson Foundation so we are excited to work with Wallin Education Partners to provide this grant to help another, high-potential student pursue their interest in a STEM field.”



EDGAR MORALES BRAVO

.....

Brooklyn Center High School
University of Minnesota - Twin Cities

Enterprise SCHOLARS

DONOR PARTNER SINCE 2010
SCHOLARS SUPPORTED: 158

.....

Funding for the Enterprise Scholars is provided by the Enterprise Education Foundation, which was established to provide scholarships to academically qualified students from the Twin Cities area. We would like to especially acknowledge Vern Beck, who was the major contributor to our foundation. Vern left much of his estate to the Enterprise Education Foundation to help support a positive future for the young people of our community.

Our objective is to assist students from the Twin Cities area who are academically qualified, have financial need, and have demonstrated leadership skills while in high school. We support scholars with an interest in the study of business or STEM programs. Enterprise has partnered with Wallin Education Partners since 2009, supporting 158 scholars. We know that supporting students is an investment in young people's education that will make a difference in our community.



SALEHA ANWAR

.....

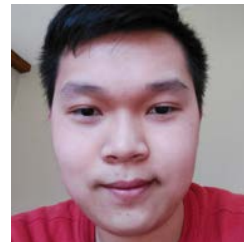
Blaine High School
University of Minnesota - Twin Cities



QIUTING FANG

.....

Burnsville High School
University of Minnesota - Twin Cities



TAN THANH NHAN LE

.....

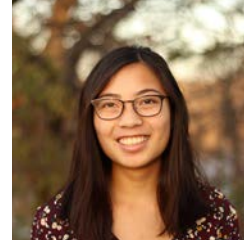
Blaine High School
University of Minnesota - Twin Cities



NHU Y NGUYEN

.....

Burnsville High School
University of Minnesota - Twin Cities



JUSTINE WULFF

.....

Como Park High School
University of Minnesota - Twin Cities



OMAR SALEM

.....

Spring Lake Park High School
University of Minnesota - Twin Cities



MEMPHIS THAO

.....

Harding High School
University of Minnesota - Twin Cities

Esther Johnson SCHOLAR

DONOR PARTNER SINCE 2008
SCHOLARS SUPPORTED: 11

.....

My mother, Esther Johnson, would have been a very good candidate for a Wallin Education Partners scholarship. From a poor farming family in southern Minnesota, she was the oldest of seven children and the first to graduate from high school. When it was time for her to continue her education, her mother became very ill and she was needed at home to care for her brothers and sisters. Mother was a genius at math and I know she would have thrived in college. I remember her with happiness and gratitude when a scholarship is given in her name.

- Ardes Johnson



LAY LAY

.....

Humboldt High School
University of Minnesota - Twin Cities

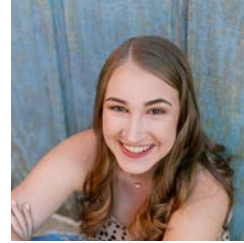


Ettinger SCHOLARS

DONOR PARTNER SINCE 2016
SCHOLARS SUPPORTED: 30



The Ettinger Scholars are sponsored by Jeff and LeeAnn Ettinger. They believe in the value of education and find it gratifying to help hard-working young people reach for their dreams. They live in Austin, Minnesota, and have four adult children.



BAILEY DUFAULT



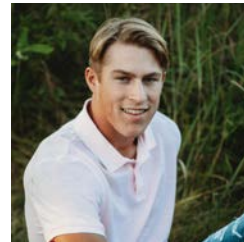
Austin High School
Iowa State University



ESTEPHANIE FLYNN



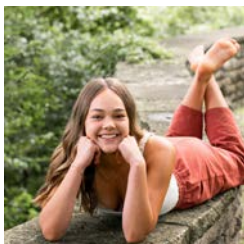
Austin High School
Bethany Lutheran College



TEYGHAN HOVLAND



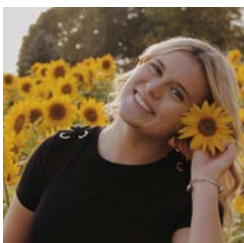
Austin High School
St. Cloud State University



AVA JOVAAG

.....

Austin High School
University of Minnesota - Twin Cities



MADISON RYSAVY

.....

Pacelli High School
The College of St. Scholastica



Estephanie Flynn • Ettinger Scholar

Federated Insurance SCHOLAR

DONOR PARTNER SINCE 2021
SCHOLARS SUPPORTED: 1

.....

Federated Insurance believes deeply in supporting the communities where our employees live and work. Our internal culture is rooted in the approach of “giving back.” We believe that investing in education is investing in the future. Our support of this education scholarship helps to ensure that a talented student has the best opportunity to achieve their educational goals and career dreams. We are proud to support a talent pipeline for the workforce of the future and are thrilled to have started this partnership with Wallin Education Partners.

For more than 100 years, Federated Insurance® has made its business about people. Today, we provide commercial insurance and risk management services to more than 40,000 businesses in select industries. We are headquartered in Owatonna, Minnesota, and operate service offices across the country. As a multi-line company, we offer property, liability, surety, auto, workers compensation, umbrella, and life and disability income insurance coverage.



HTOO SAY

.....

Humboldt High School
University of Minnesota - Twin Cities



Flaherty Family Foundation SCHOLAR

DONOR PARTNER SINCE 2021
SCHOLARS SUPPORTED: 1



Flaherty Family Foundation

The Flaherty Family Foundation (FFF) began providing high school scholarships to high achieving students with economic need in 1990. Scholarships provide students access to faith-based, college prep partner high schools. Founded and funded by Mr. Ed Flaherty, the FFF has grown to support over 400 Flaherty Scholars in over 30 high schools in MN, DC, MD, VA, NJ,

and MT each year. Flaherty Scholars undergo an extensive application process and are selected during the spring of their eighth grade year; their Flaherty Scholar journey begins in ninth grade. In addition to scholarship dollars, students engage in programming and mentorship that leads to college and career readiness upon graduation. In 2019, the FFF expanded its mission by setting an ambitious goal that all Flaherty Scholars would graduate from college in four years or less with \$22,000 or less in student loans.

The FFF is committed to supporting Scholars beyond high school with access to continued mentorship and an affordable college education where they are able to graduate with as little debt as possible. Our partnerships with Wallin Education Partners, postsecondary institutions, foundations, and private donors are the key to accomplishing this commitment.

In this new partnership with Wallin Education Partners, we are proudly supporting the following Flaherty Scholar in their pursuit of reaching their highest potential.



TAYLOR WRIGHT

.....

The Catholic High School of Baltimore
Howard University

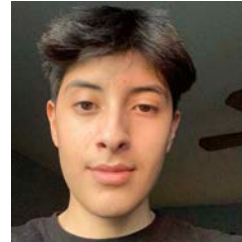


Frank and Elaine Lang Family SCHOLARS

DONOR PARTNER SINCE 2021
SCHOLARS SUPPORTED: 2



We are proud to support scholars on their paths toward achieving their education and meaningful careers. Your motivation, contributions to our community, and potential to achieve great things are inspiring. We stand behind you and are continually rooting for your success.



ALEXIS ORTIZ-ROBLES



DeLaSalle High School
University of St. Thomas



CARMEN THOMAS



DeLaSalle High School
Howard University

Friends of Jasper Lake SCHOLAR

DONOR PARTNER SINCE 2021
SCHOLARS SUPPORTED: 1

.....

As friends whose professional and civic contributions stem from the educations we received, we created this scholarship in support of a student continuing along her or his educational path.



DAVID VANG

.....

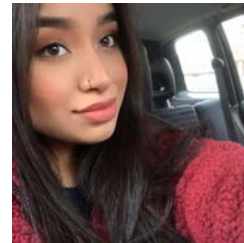
Highland Park Senior High School
University of Minnesota - Twin Cities

Geiwitz SCHOLAR

DONOR PARTNER SINCE 2019
SCHOLARS SUPPORTED: 2



The Pat Geiwitz Scholar is sponsored by Al Geiwitz and Mary McMahon in memory of their son. "We are so grateful for our educations and for our ability to encourage and help our three children value the gift of their educations. We are thrilled to be able to sponsor another Wallin Education Partners Scholar."



JOSELIN HERRERA BUSTOS



Hiawatha Collegiate High School
University of Minnesota - Twin Cities

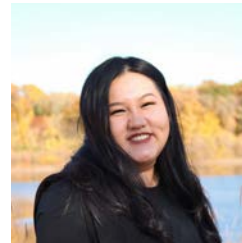
G. Robert Strauss Jr. SCHOLAR

DONOR PARTNER SINCE 2016
SCHOLARS SUPPORTED: 3

.....

This scholarship is established in memory of my best friend, G. Robert “Bob” Strauss, who was murdered in Cincinnati in a burglary gone wrong in his own home. Bob was only 27 at the time. A graduate of Harvard University and a recipient of an MBA from the Darden School of Business, Bob was destined for tremendous achievements in this world before his life was taken from him. Bob and I grew up together in Buffalo, New York, where we attended Nichols School, a demanding middle and high school. We became fast friends in the fifth grade and this friendship continued up until that fateful day in August 1988. This scholarship embodies all the potential that education has to offer and is one of the many ways that I have chosen to keep the memory of my friend alive.

- William Truscott



KA LIA KHANG

.....

Champlin Park High School
University of Minnesota - Twin Cities

Halverson SCHOLAR

DONOR PARTNER SINCE 2018
SCHOLARS SUPPORTED: 5

.....

We both came from families who valued education and we spent our careers in educational fields—Bruce as an elementary school teacher and Helen as a reference librarian in public libraries. We were fortunate that when we finished high school, a college education was financially feasible for many graduates. Unfortunately, the current high costs associated with educational programs beyond high school act as a barrier for many students so that they may not further their formal education or graduate with a lot of debt. Our goal is to help a motivated student achieve their dream of an advanced education that will open their life to many exciting opportunities.



ISABELLA LOXTERCAMP

.....

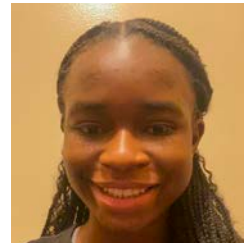
Blaine High School
Gustavus Adolphus College

Helen Meyer SCHOLAR

DONOR PARTNER SINCE 2021
SCHOLARS SUPPORTED: 1



My generation was the first to attend college on both sides of my family. I was able to manage it financially because of several key scholarships. What a difference it made! I still remember the thrill of reading course catalogs and marveling at the interesting and diverse offerings, like a giant smorgasbord for a curious mind. I support a Wallin Scholar because I want to help ignite someone else's imagination and support their dream.



SHARON IZUORA



Irondale High School
University of Minnesota - Twin Cities

Holman SCHOLARS

DONOR PARTNER SINCE 2004
SCHOLARS SUPPORTED: 164

.....

Tom and Kim Holman are the founders and Directors of the Morning Foundation, a private foundation established in 1996 to focus on children's education, health, and social services. Previously, Tom was an executive with Dell Computer Corporation and Kim was a senior manager with the Texas Department of Health. Tom and Kim have been active with a number of nonprofit organizations and enjoy spending time with their four daughters. Tom and Kim support scholars through Wallin Education Partners because they believe that education is not only important for individuals, it is also important for our society as a whole. Their hopes are that their scholars will find success in school and in life through determination, hard work, and support from others and that their scholars will pay it forward by helping others throughout their own lives.



SAMRAWIT ALENE

.....

Highland Park High School
University of Minnesota - Rochester



KAYLEE (ZUKO) BUECHLER

.....

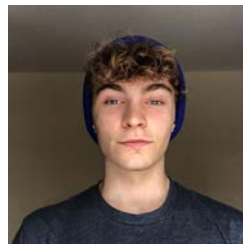
Roosevelt High School
Macalester College



ASSEM ELSAYAD

.....

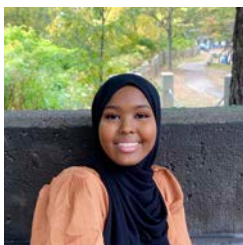
Central High School
University of Minnesota - Twin Cities



LUKAS LOCK-SCAMP

.....

Edison High School
Macalester College



RAHMA FARAH

.....

South High School
University of Minnesota - Twin Cities



JINTING LU

.....

Johnson High School
Macalester College

Hyland SCHOLAR

DONOR PARTNER SINCE 2021
SCHOLARS SUPPORTED: 1



Our goal is to support a student in achieving their educational goals. In our lives, we have experienced the power of education. We are thrilled to play a role in opening doors and creating opportunity for a deserving scholar.



BRITTANY BENITEZ



Hiawatha Collegiate High School
St. Olaf College



Jackson SCHOLARS

DONOR PARTNER SINCE 2015
SCHOLARS SUPPORTED: 13



Darren and Terry Jackson are the founders and Directors of the Jackson Family Foundation, a private foundation established in 1995 to address the disparities and needs of the underserved and marginalized in our society with a primary focus on education and social services. Darren is the Chairman of the Board of Cree Inc. and All-In Milwaukee. Previously, he served as CEO of Advance Auto Parts, CFO of Best Buy and Nordstrom. Terry serves as a community volunteer for Second Stork and All-In Milwaukee, Previously, Terry was an emergency room nurse at Children’s Hospital of Wisconsin. Darren and Terry are active with a number of nonprofit organizations including Marquette University and the Drexel Fund. They have three grown children and one granddaughter. Darren and Terry support scholars through Wallin Education Partners and founded All-In Milwaukee because of their passion for social justice and the extraordinary outcomes these programs provide as a foundation for a meaningful life. Their hopes are that the scholars are catalysts for positive and sustainable improvements for their families, local communities, and society as a whole.



SOPHIA ANDREWS



Hill-Murray School
University of Wisconsin - River Falls



KIERAN WHITE



Cretin-Durham Hall
University of Minnesota - Twin Cities

Jennifer Novak SCHOLAR

DONOR PARTNER SINCE 2021
SCHOLARS SUPPORTED: 1



The Jennifer Novak scholarship is sponsored by Jay and Jennifer Novak, who are gratified for the benefits of their own educational opportunities and wish for similar opportunities for others. Both Jay and Jennifer have degrees from two educational institutions, as do each of their three adult children. Jay is also a Trustee and Treasurer of Hamline University.



SUZANNE NERESON



Chesterton Academy
Hamline University

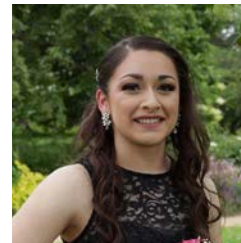
Kady Hexum SCHOLAR

DONOR PARTNER SINCE 2021
SCHOLARS SUPPORTED: 1

.....

My name is Kady Hexum and I'm a first-time Wallin Education Partner Scholarship Sponsor. I come from a family of six children, and unfortunately, postsecondary education was not something that we were encouraged to pursue. Although I graduated fourth in my class with a 3.98 GPA, I wasn't able to attend college until later in my adult life. Over the course of about 12 years, I managed to earn an Associate in Arts Degree with an Emphasis in Spanish. I LOVE SCHOOL. I could only afford one class at a time and had to schedule them in the early morning so that I could leave immediately afterward for my demanding full-time job. I will never forget the feeling (and that delicious school smell!) of entering Normandale Community College, and the first day of class where Mr. Narvaez spoke only in Spanish and I was in HEAVEN. In fact, when class was over and it was time to go to work, I cried.

One of my neighbors was a Director at Wallin Education Partners, and she shared how Wallin has helped so many scholars achieve their education dreams. I decided to allocate some of my savings to create a scholarship to make the road a little easier for a deserving student. I'm already feeling inspired to continue my own studies and finally earn my Bachelor's Degree.



PAMELA SÁNCHEZ

.....

Cristo Rey Jesuit High School
Bethel University

Keller Family Foundation SCHOLAR

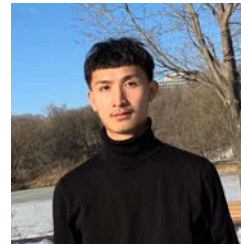
DONOR PARTNER SINCE 2021
SCHOLARS SUPPORTED: 1



The Michael and Nancy Keller Family Foundation was formed in 2007 to help students further their educational goals as well as have access to resources to ensure these goals are achieved.

We are so appreciative to have partnered with Wallin Education Partners to provide the proper support for young scholars to achieve their aspirations and dreams.

Mike and Nancy live in Owatonna, Minnesota, and are parents to three children, Daniel, David, and Allison who also look to become active in the mission of the Keller Family Foundation in providing scholarship opportunities.



MOO NAY BLUT



Washington Technology Magnet School
Hamline University



Kirwin SCHOLAR

DONOR PARTNER SINCE 2016
SCHOLARS SUPPORTED: 5



Paul and Jill Kirwin launched the Kirwin Scholarship as part of their commitment to help talented and aspiring young women achieve their vision for a brighter future through higher education. They believe firmly in the power of education and hard work to create opportunity and advancement for all Americans.

After a five-year battle with cancer, Jill passed away in 2020. She took great pride in meeting and supporting our scholars over the years. The next generation of Kirwins, Lexi and Tina, look forward to continuing the Kirwin Scholarship well into the future.



RAGHAD MOHAMMED



Columbia Heights High School
University of Minnesota - Twin Cities

Marie Rothschild SCHOLAR

DONOR PARTNER SINCE 2020
SCHOLARS SUPPORTED: 2

.....

David Rothschild is a managing board member of the Rothschild Foundations, which are dedicated to supporting causes that make the world a better place. The family has long had a deep commitment to addressing the root causes of all forms of inequality, and focuses on organizations that support educational opportunities, community well-being, and the arts. David is also the incoming Board Chair for Central Scholarship and a member of the Board of Trustees of McDonogh School. He is a member of the Do Good Council and a mentor for the Do Good Accelerator and Do Good Institute at the University of Maryland.

David's grandmother, Marie Rothschild, was the first woman to chair the Red Cross blood drive and led racial integration of the blood donor collection program. She was instrumental in the integration of the Grand Jurors Association, the first woman to serve on the Board of Sinai Hospital, and supported European refugee children from Nazi Europe, opening her home to several of them.



NURIT GUTIERREZ-CUATE

.....

Irondale High School
University of Wisconsin - Madison

Maybloom-Suzukamo SCHOLARS

DONOR PARTNER SINCE 2016
SCHOLARS SUPPORTED: 12



The Maybloom-Suzukamo Scholarship was established to honor Iris Maybloom, a gifted and inspirational American History teacher and counselor in Los Angeles. She helped generations of students prepare for college, particularly students of color who had no clear roadmap of how to get there. Her students learned not just to memorize dates, names, and places but to see the real people of history, both the famous and the ordinary. Her teaching method was one part standup comedy, one part Socratic inquiry, and one part Spanish Inquisition, as we were prodded, cajoled, and terrorized into coughing up an original thought.

Iris introduced us to “The Scarlet Letter,” “The Grapes of Wrath,” and “The Great Gatsby.” For some of us, it was the first real literature we’d ever read.

Her tools were the handwritten college essay exam and typed, footnoted research papers that required bus rides to university libraries. By the end of the semester, we learned how good writing and critical thinking were inextricably tied.

But most importantly, Iris taught her students to dream bigger. She told us not to stare at the daunting cost of college but to focus on the vistas beyond. College wasn’t a destination in and of itself but a jumping-off point.

In that spirit, we award these scholarships to a new generation of students of color. We hope these awards help them find their own vistas and enjoy the view before they make the next leap in their lives.



TE ARYKAH FRYE

.....

Central High School
University of St. Thomas



JACQUELINE MARTINEZ

.....

Harding High School
University of Minnesota - Twin Cities



McDonagh-Sullivan SCHOLAR

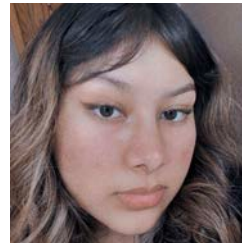
DONOR PARTNER SINCE 2019
SCHOLARS SUPPORTED: 3

.....

Our Wallin scholarship is named after our parents, Bernard and Katherine McDonagh (Irish immigrants) and John and Mary Sullivan (first-generation Irish-Americans). Only one of our parents was able to complete high school due to economic conditions during the Great Depression.

This did not stop them, however, from realizing the importance of a college education for success in America. In spite of severe financial limitations, they saw all of their children graduate from college (debt-free) and go on to succeed in a wide variety of professions. It is in thanks to them for their foresight and sacrifice in endowing us with the means to succeed that we have named our scholar program in their honor.

- Bernard and Sheila McDonagh



JACQUELINE QUIZHPI

.....

DeLaSalle High School
Concordia University - St. Paul



Medtronic SCHOLARS



Medtronic
FOUNDATION

DONOR PARTNER SINCE 2008
SCHOLARS SUPPORTED: 179



The Medtronic Foundation focuses on improving lives for underserved populations worldwide, as well as supporting communities where Medtronic employees live and give. Our vision is a world where every person has equitable access to quality healthcare and education. We are proud to support the Wallin Education Partners, founded by former Medtronic CEO Win Wallin. For years, this program has helped spark

future generations of leaders, healthcare professionals, and science innovators that will make the world a healthier place to live. We see support for work like this as one of the ways the Medtronic Foundation strives to improve the lives of communities around the world.



JAKOBI ARUEYA

.....

Blaine High School
Iowa State University



TRAN DANG

.....

Champlin Park High School
University of Minnesota - Twin Cities



MADISON FRANCK

.....

Coon Rapids High School
The College of St. Scholastica



CASEY MORRISSETTE

.....

Champlin Park High School
Howard University



BRANDON PORTILLO

.....

Richfield High School
University of Minnesota - Twin Cities

Minnesota Opportunity SCHOLARS

DONOR PARTNER SINCE 2012
SCHOLARS SUPPORTED: 64

.....

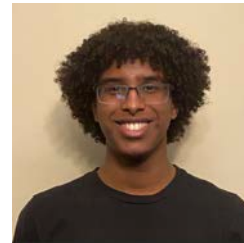
The Minnesota Opportunity Scholarship was established by Sara and Bob Lumpkins in 2012. The Lumpkins believe strongly in the value of higher education and are long-time admirers of the Wallin family for creating the program. They especially value Wallin Education Partners' sustained advisory support to help ensure a successful university experience for their scholars.



DANA KENNEY-LILLEJORD

.....

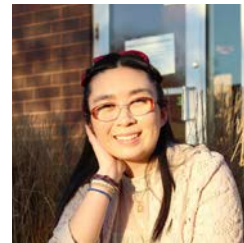
Robbinsdale Cooper High School
University of Minnesota - Twin Cities



ABDIKARIM MOHAMED

.....

Edina High School
University of Minnesota - Twin Cities



MICHELLE TRAN

.....

Washington Technology Magnet School
Grinnell College



Nellie Griswold Francis and William T. Francis SCHOLARS

DONOR PARTNER SINCE 2021
SCHOLARS SUPPORTED: 2



In 1914, Nellie Griswold Francis founded the only black women's suffrage organization in Minnesota. Over the course of several years, she was a pioneer in Minnesota for voting rights and racial justice in addition to being an accomplished singer and local church leader. William Francis was a railroad lawyer early in his career, later establishing a successful private law practice. He was a Republican and ran unsuccessfully for city and state-wide offices. Also an accomplished singer, he and Nellie married in 1893. They lived in St. Paul until 1927 when William Francis was appointed Minister and Consul to Liberia, West Africa. The first African-American diplomat from Minnesota, William investigated and reported on Liberian government complicity in the forced labor of Liberian men. Tragically, William died in Monrovia of yellow fever in 1929.

Nellie and William are further distinguished by an experience they endured while living in St. Paul. In 1925, they moved from the Rondo neighborhood to the Macalester-Groveland neighborhood, where they experienced direct, virulent racial hatred at the hands of a self-identified neighborhood improvement association. They were "encouraged" by white neighbors to move out of the neighborhood with cross-burnings and protests at their home. The Francises did not yield. They continued to live in the neighborhood for more than two years before William was appointed to his diplomatic post. Today, Macalester-Groveland continues to be a popular neighborhood in St. Paul. It is approximately 90 percent white, with home values at approximately 175 percent of the city's median.

It is hoped that Nellie Griswold and William Francis will inspire scholars to aim high and persevere. Their story also reminds us all to give thoughtful consideration to our neighbors, those Minnesotans close to us, both geographically and on the historical timeline.



AUDREY ARREGUIN GUZMAN

.....
Champlin Park High School
University of Minnesota - Twin Cities



SUHAM JIBRILL

.....
Ubah Medical Academy
University of Minnesota - Twin Cities



NorthStar Education Finance SCHOLARS



NorthStar

DONOR PARTNER SINCE 2014
SCHOLARS SUPPORTED: 559



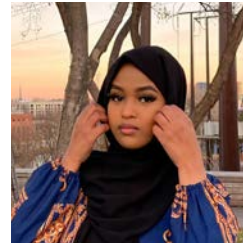
NorthStar Education Finance Inc. (NEF) is dedicated to helping students obtain an affordable education. It continues to support its other charitable purposes, which include: foster aid as well as encouraging and assisting students—especially first-generation students—in pursuing higher education. Supporting its mission, the company provides students who have existing loans issued under its Total Higher Education Loan Program (THE Loan Program) the lowest possible financing cost. In particular, NEF returns 90 percent of its excess revenues to student borrowers via the THE Repayment Bonus Program.

From 1996 to 2010, NEF was the 12th largest lender of postsecondary education loans in the United States. During that time, NEF made over \$7.5 billion in education loans. During its tenure as an active lender of education loans, NEF paid over \$125 million in origination fees on behalf of student borrowers to the U.S. Department of Education. To date, NEF has returned to its student borrowers over \$110 million in excess profits, allowing borrowers to more quickly pay down their education loan balances. NEF reserves an additional 10 percent of excess reserves for philanthropic purposes.

NEF's ongoing philanthropic goals are to:

- Help students pay down their existing balances by using 90 percent of its excess reserves to pay down their outstanding balances
- Continue to provide financial literacy education and assistance to these student loan borrowers to enable them to successfully repay their loans, and lead more productive lives
- Manage its financing as necessary to maximize the THE Repayment Bonus paid to borrowers
- Provide scholarship grants to other organizations to further NEF's educational mission

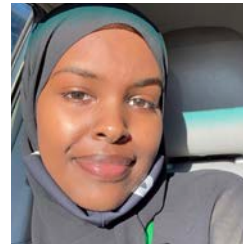
In support of its mission, NEF joined with Wallin Education Partners in 2014 to sponsor scholarships. In addition, NEF provides the Grad Ready financial literacy program to all current and incoming Wallin/NorthStar Scholars. Wallin Education Partners selects NorthStar Scholars based on their potential to be successful in college and in their future careers. Factors also considered are the scholar's motivation, contributions to the community, and their willingness to take rigorous classes in preparation for a successful college experience.



AYAN ABDI

.....

Robbinsdale Armstrong High School
University of Minnesota - Twin Cities



MARYAM ABDI

.....

Edina High School
University of Minnesota - Twin Cities



NASTEHO ABDI

.....

Edison High School
Hamline University

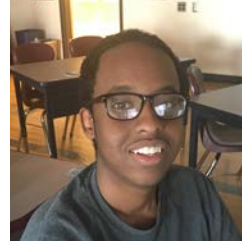
NorthStar Education Finance SCHOLARS



SAIDA ABDIRAHMAN

.....

Burnsville High School
University of Minnesota - Twin Cities



ABDILLAHI ALI

.....

Edison High School
Metropolitan State University



HUDA ABDULAHI

.....

Edison High School
Augsburg University



KALID ALI

.....

Como Park High School
Macalester College



PRINCESS AGYAKO

.....

Roseville Area High School
Augsburg University



SALMA ALI

.....

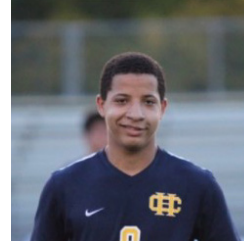
Roosevelt High School
St. Catherine University



HIBAQ ALIHASHI

.....

Central High School
University of Minnesota - Twin Cities



AHMED AMINE DAOUD

.....

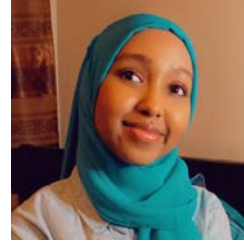
Columbia Heights High School
University of Minnesota - Twin Cities



AISHA AMBO

.....

Highland Park High School
University of Minnesota - Rochester



FADUMO ARAB

.....

Highland Park High School
University of Minnesota - Twin Cities

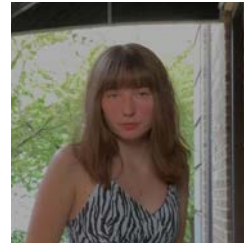
NorthStar Education Finance SCHOLARS



DIEGO ARGUETA

.....

Cristo Rey Jesuit High School
Saint John's University



MERIKA BAKER

.....

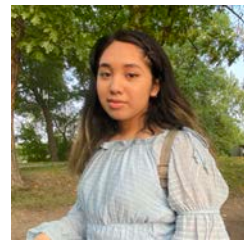
Como Park High School
University of Wisconsin - Madison



DAISY ARROYO AMBROSIO

.....

Roosevelt High School
St. Catherine University



VALERIE BARRERA ESTRADA

.....

Columbia Heights High School
University of Minnesota - Twin Cities



VERONICA AUCAPINA

.....

Cristo Rey Jesuit High School
Augsburg University



RAHWA BERHANE

.....

St. Louis Park High School
Augsburg University



NorthStar Education Finance SCHOLARS



Adna Mohamed
NorthStar Education Finance Scholar



SHERIF BOLARINWA

.....
Champlin Park High School
Winona State University



YUELIA CHANG

.....
Washington Technology Magnet School
Macalester College



ADAM DUREN

.....
Coon Rapids High School
University of Wisconsin - Madison



ALIVIA FARRELL

.....

Bloomington Jefferson High School
North Central University



YANET GONZALEZ ACEVEDO

.....

Cristo Rey Jesuit High School
St. Catherine University



ANNA FLEISCHHACKER

.....

North St. Paul High School
Hamline University



KAREN GONZALEZ ARPISTA

.....

Cristo Rey Jesuit High School
University of Minnesota - Twin Cities



DULCE GARCIA

.....

Bloomington Kennedy High School
University of Minnesota - Twin Cities



MARY GREAVES

.....

Coon Rapids High School
Winona State University

NorthStar Education Finance SCHOLARS



ABEL HANNS

.....

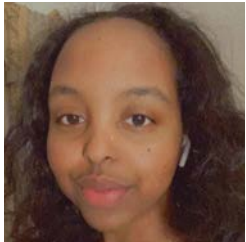
Harding High School
University of Minnesota - Twin Cities



ZEINAB HERSI

.....

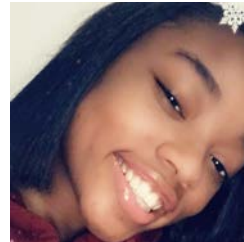
Ubah Medical Academy
University of Minnesota - Twin Cities



AYAN HASSAN

.....

St. Louis Park High School
University of Minnesota - Twin Cities



NANCY HOLMES

.....

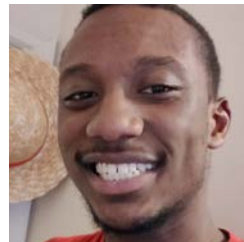
North Community High School
Hamline University



AMINA HASSAN

.....

Ubah Medical Academy
St. Catherine University



SIRCHARLES HUBBARD

.....

Patrick Henry High School
Augsburg University



RACHAEL HUNTER

.....

Edina High School
University of Wisconsin - Madison



SUHABE JAMA

.....

St. Louis Park High School
University of Minnesota - Twin Cities



LAMEE IBRAHIM-WADAY

.....

Columbia Heights High School
University of Minnesota - Twin Cities



ADNA JIMALE

.....

Central High School
University of Minnesota - Twin Cities



SALMA JAMA

.....

Roosevelt High School
St. Catherine's University



TOU KHANG

.....

Park Center High School
University of St. Thomas

NorthStar Education Finance SCHOLARS



CURTIS KOKULOKU

.....

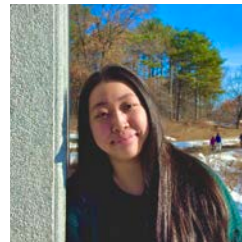
Park Center High School
University of Minnesota - Twin Cities



KADIJA KOROMA

.....

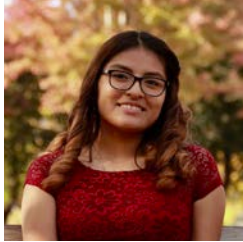
Cristo Rey Jesuit High School
University of St. Thomas



MELONY LEE

.....

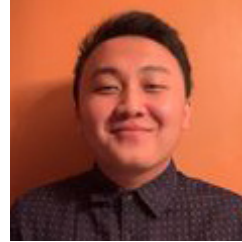
Washington Technology Magnet School
University of Minnesota - Twin Cities



GISSELLE ANAHI LLAPA PAREDES

.....

Cristo Rey Jesuit High School
University of St. Thomas



DINH LOR

.....

Harding High School
University of Minnesota - Twin Cities



YUE PHENG LOR

.....

Washington Technology Magnet School
Saint John's University



STEPHANIE LOYA

.....

Cristo Rey Jesuit High School
University of St. Thomas

NorthStar Education Finance SCHOLARS



ANH HOANG LY

.....

Edison High School
Hamline University



RUTH MARTINEZ MARTINEZ

.....

Roosevelt High School
University of Northwestern - St. Paul



JOSUE MARTINEZ

.....

Community of Peace Academy
University of Wisconsin - Madison



LAISHA MARTINEZ OLGUIN

.....

Coon Rapids High School
University of Minnesota - Twin Cities



VERONICA MARTINEZ

.....

Harding High School
Augsburg University



JOXERY MEZEN CAMACHO

.....

Highland Park High School
University of Minnesota - Twin Cities



ADNA MOHAMED

.....

Irondale High School
University of Minnesota - Twin Cities



FAISA MOHAMED

.....

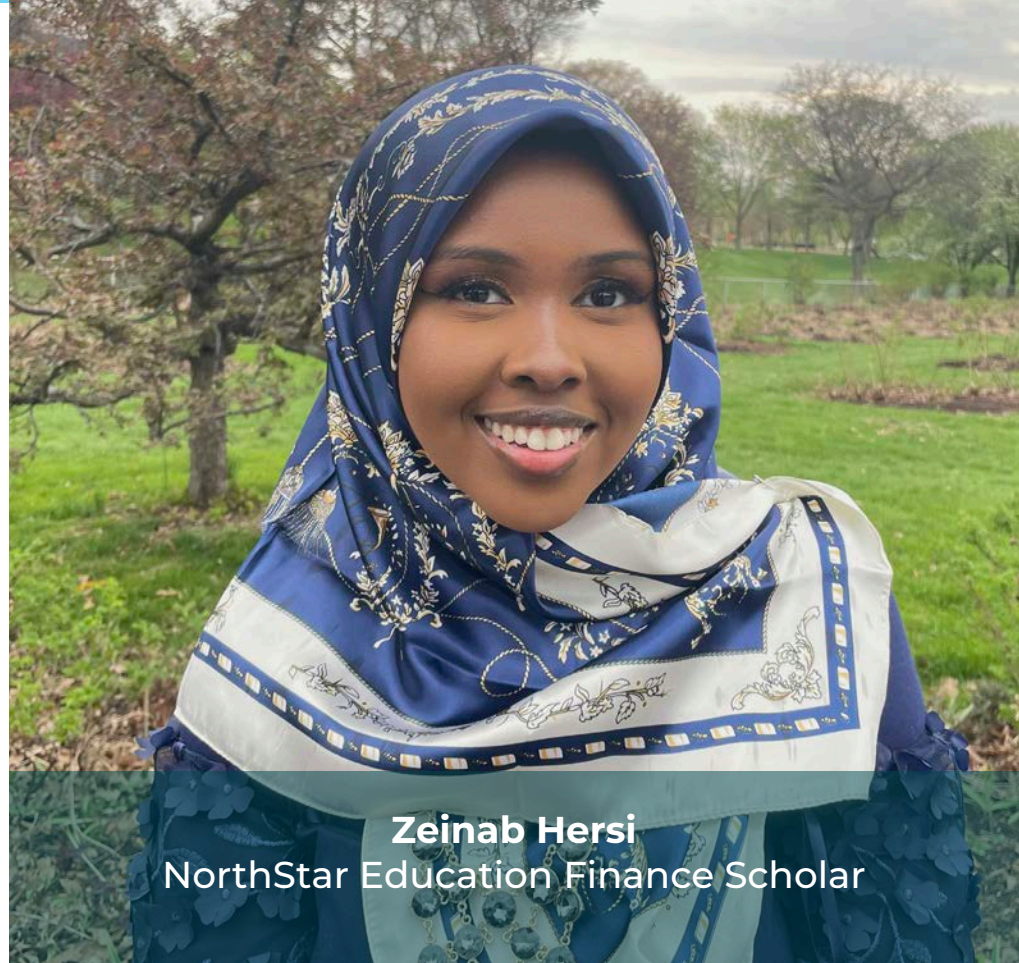
Burnsville High School
St. Catherine University



NADRA MOHAMED

.....

Park Center High School
University of Minnesota - Twin Cities



Zeinab Hersi
NorthStar Education Finance Scholar

NorthStar Education Finance SCHOLARS



ROTHO MOHAMED

.....

Irondale High School
St. Catherine University



DISSEL MOO

.....

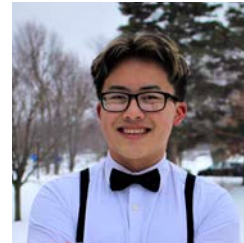
Como Park High School
University of Minnesota - Twin Cities



SAMSAM MOHAMOUD

.....

Columbia Heights High School
Concordia University - St. Paul



JUSTIN MOUA

.....

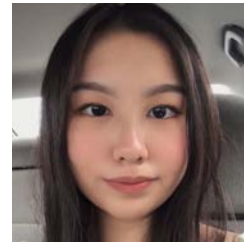
Johnson High School
University of Minnesota - Twin Cities



MUSTAFA MONEER

.....

Coon Rapids High School
University of Minnesota - Twin Cities



ROSE MOUA

.....

Patrick Henry High School
University of Minnesota - Twin Cities



EVAN NELSON

.....

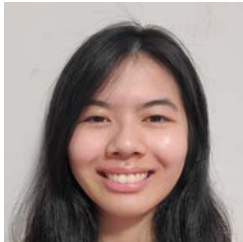
St. Louis Park High School
University of Minnesota - Twin Cities



SHILAH ODA

.....

Edison High School
Augsburg University



CHRISTY NGO

.....

Patrick Henry High School
University of Minnesota - Twin Cities



ASHO OMAR

.....

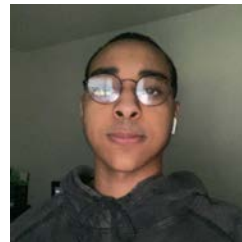
Ubah Medical Academy
St. Catherine University



KU NYAW

.....

Central High School
St. Cloud State University



AYUB OSMAN

.....

Patrick Henry High School
University of Minnesota - Twin Cities

NorthStar Education Finance SCHOLARS



BRITANY PACHECO

.....

Bloomington Kennedy High School
University of Minnesota - Twin Cities



YAHIR PONCE RODRIGUEZ

.....

Cristo Rey Jesuit High School
University of Minnesota - Twin Cities



JANN PALLAZHCO

.....

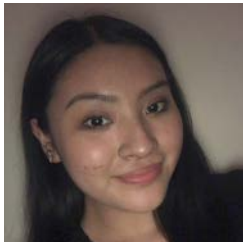
Cristo Rey Jesuit High School
University of St. Thomas



JEOBANI REYES LEON

.....

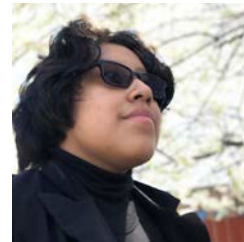
Richfield High School
University of Minnesota - Twin Cities



ANGELICA PENAFORT GALAN

.....

Bloomington Kennedy High School
University of Minnesota - Twin Cities



LESLIE RODRIGUEZ CABRERA

.....

Cristo Rey Jesuit High School
University of Minnesota - Twin Cities



JEHOVAHNA ROSS-CUNNINGHAM

.....

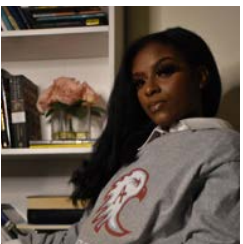
Edison High School
North Dakota State University



MARKOS SIME

.....

Irondale High School
University of Minnesota - Twin Cities



JENELLE SANNER-ROBINSON

.....

North Community High School
Augsburg University



JERMYA SIMS

.....

Cristo Rey Jesuit High School
St. Catherine University



MA SHWE

.....

Roseville Area High School
Hamline University



ISABELLA STEWARD

.....

St. Louis Park High School
Grinnell College

NorthStar Education Finance SCHOLARS



HATIM SULIMAN

.....

Champlin Park High School
University of Minnesota - Twin Cities



APASARA THAO

.....

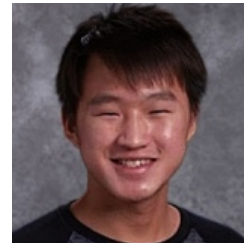
Highland Park High School
Bethel University



FAITH SWORR

.....

Coon Rapids High School
University of Minnesota - Twin Cities



LENG THAO

.....

North St. Paul High School
University of Minnesota - Twin Cities



KU GAY THA

.....

Washington Technology Magnet
Hamline University



PEYTON THAO

.....

Columbia Heights High School
University of Minnesota - Twin Cities



NATASHA THOMPSON

.....

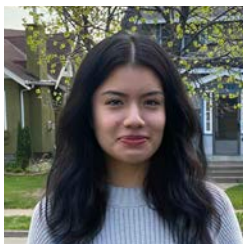
St. Louis Park High School
North Dakota State University



JAVIER TREJO-JASMIN

.....

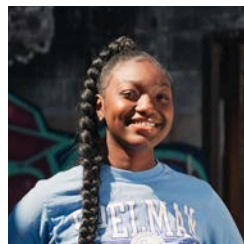
Burnsville High School
Concordia University - St. Paul



BLANCA TORRES

.....

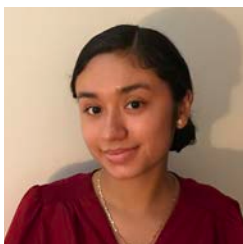
Cristo Rey Jesuit High School
St. Olaf College



MONAEA UPTON

.....

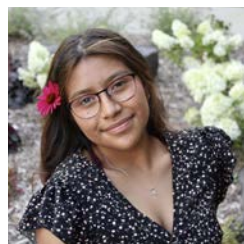
North Community High School
Spelman College



JENNIFER TORRES LOPEZ

.....

Cristo Rey Jesuit High School
University of St. Thomas



KIMBERLY URAGA GARCIA

.....

Bloomington Kennedy High School
St. Catherine University

NorthStar Education Finance SCHOLARS



ANDREA VANG

.....

Patrick Henry High School
University of Minnesota - Twin Cities



FUE VANG

.....

Patrick Henry High School
University of Minnesota - Twin Cities



ASHLEY VANG

.....

Roseville Area High School
University of Minnesota - Twin Cities



LAI VANG

.....

Harding High School
Hamline University



DEHLIA VANG

.....

Harding High School
St. Catherine University



NKAUJLIAMTSHUJ VANG

.....

Johnson High School
University of Minnesota - Twin Cities



NorthStar Education Finance SCHOLARS



SANDRA VANG

.....

Patrick Henry High School
University of Minnesota - Twin Cities



STARLEY VUE

.....

Harding High School
University of Minnesota - Twin Cities



PRINCESS VASQUEZ

.....

Cristo Rey Jesuit High School
Concordia University - St. Paul



BADHASA WAKO

.....

St. Louis Park High School
University of Minnesota - Twin Cities



FAITH VUE

.....

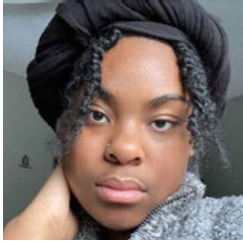
Johnson High School
University of Minnesota - Twin Cities



GRACIE WEIKLE

.....

Edina High School
College of St. Scholastica



JAI WILLIAMS

.....

Bloomington Kennedy High School
Tuskegee University



BRENDAN WRIGHT

.....

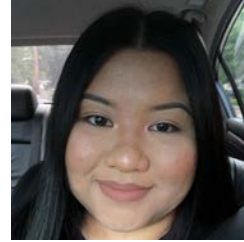
Robbinsdale Armstrong High School
University of Minnesota - Duluth



FAITH XIONG

.....

Harding High School
University of Minnesota - Twin Cities



IAB ONG XIONG

.....

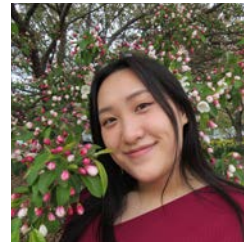
Johnson High School
University of Minnesota - Twin Cities



MARIANNA XIONG

.....

Harding High School
University of Minnesota - Rochester



MAY XIONG

.....

Roseville Area High School
University of Minnesota - Twin Cities

NorthStar Education Finance SCHOLARS





NIKKI XIONG

.....

Central High School
St. Catherine's University



YEEPHENG XIONG

.....

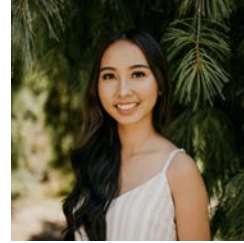
Champlin Park High School
Augsburg University



CHEULIEN YANG

.....

Harding High School
Metropolitan State University



MOR YANG

.....

Johnson High School
University of Minnesota - Twin Cities



MUACHEE YANG

.....

Washington Technology Magnet School
University of Minnesota - Duluth



MUAJ YANG

.....

Champlin Park High School
Augsburg University

NorthStar Education Finance SCHOLARS



TACOUA YANG

.....

Patrick Henry High School
St. Catherine's University



YADIRA ZAMORANO DIAZ

.....

Cristo Rey Jesuit High School
Concordia University - St. Paul



AYAN YUSUF

.....

North St. Paul High School
University of St. Thomas



ZAID YUSUF

.....

St. Louis Park High School
University of Minnesota - Twin Cities

O'Keefe SCHOLAR

DONOR PARTNER SINCE 2017
SCHOLARS SUPPORTED: 2

.....

The O'Keefe Scholarship was established by Mary Treacy O'Keefe and Dan O'Keefe, consistent with their desire to support talented young people from underrepresented backgrounds, as they pursue their educational ambitions. Dan and Mary subscribe to and support the proposition that a quality education is the key to breaking the cycle of poverty and despair, both locally and globally. Mary and Dan, and each of their four adult children, have been the beneficiaries of wonderful educational opportunities in their lives. Dan is a lawyer; Mary has a Master's Degree in Theology and is an author, speaker, and retired founder and CEO of a nonprofit. Three of their four children have graduate degrees as well. As such, they place a high value on education and they look forward to assisting Wallin Scholars as they chase their dreams. The O'Keefes are delighted to be supporters of the wonderful work being done by Wallin Education Partners.



CRISPIN JACKSON

.....

Patrick Henry High School
University of Wisconsin - Stout

Piper Sandler SCHOLARS

PIPER | SANDLER

DONOR PARTNER SINCE 2014
SCHOLARS SUPPORTED: 9

.....

Piper Sandler is committed to increasing education opportunities for Black, indigenous, and people of color (BIPOC) communities, creating development and employment opportunities and access that these students might not otherwise have.

Piper Sandler Companies (NYSE: PIPR) is a leading full-service investment bank and asset management firm serving clients in the U.S and internationally. Founded in 1895, the firm is headquartered in Minneapolis with offices across the U.S. and in Aberdeen, London, and Hong Kong. Piper Sandler offers a full suite of products to serve our

clients' business lifecycle needs, geographic reach in a global market, and deep expertise in our core sectors.

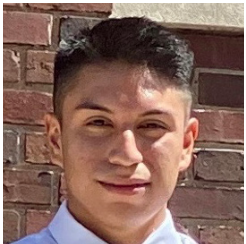
Piper Sandler is among a group of donors that have joined with Wallin Education Partners to sponsor scholarships and support students through their college years. Piper Sandler Scholars are selected because of their potential to be successful in college and in their chosen career. Their motivation, contributions to the community, and willingness to take rigorous classes will prepare scholars for a successful college experience.



BRIDGETT QUITO

.....

Cristo Rey Jesuit High School
University of Minnesota - Twin Cities



EMANUEL POPOCA SANTANA

.....

Bloomington Kennedy High School
Saint John's University



Radia SCHOLAR

DONOR PARTNER SINCE 2021
SCHOLARS SUPPORTED: 1

.....



Radia is a paint mixer manufacturer in Plymouth, Minnesota, and has been owned and operated by the Gessner Family since 1992.

We design and supply mixing equipment for the top paint suppliers in the world. Our Company's core values include investing, empowering, and improving. We believe education to be the key to these values. We are thrilled to support Wallin Education Partners to help empower its students to a stronger future.



ALEJANDRA BALTAZAR JAQUEZ

.....

Totino-Grace High School
Concordia University - St. Paul

Randall Family SCHOLAR

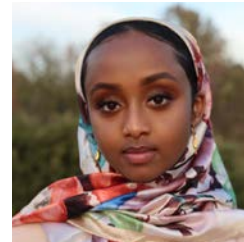
DONOR PARTNER SINCE 2019
SCHOLARS SUPPORTED: 3

.....

We heard about the Wallin Education Partners Program through good friends who have sponsored many students through the years. I was lucky enough to have attended one of the programs at St. Kate's and decided this would be a great program to help students get their college degrees and be helped along the way by the advisors provided by Wallin.

My husband, Ron (who passed away in 2013), was the first in his family to go to college. He was fortunate enough to have a four-year academic scholarship to DePauw University in Indiana and the GI bill to cover his expenses for graduate school at Dartmouth College. Our three children attended Hopkins High School and a private Minneapolis high school prior to graduating from college. It is an honor for the Randall family to sponsor another student for the next four years through the Wallin Education Partners Program. We will be doing our sponsorship through the Willard E. Smucker Foundation.

- Carole Lee Randall



ASHA BASHIR

.....

Hopkins High School
University of Minnesota - Twin Cities

Richard F. McNamara SCHOLAR

DONOR PARTNER SINCE 2021
SCHOLARS SUPPORTED: 1

.....

Richard McNamara was a successful entrepreneur and credited his success greatly to a football scholarship he received to the University of Minnesota in 1954. The foundation is now run by his daughter, Emily McNamara. In memory of her father, Emily has continued to support causes that give people opportunity through education. In addition to her support for educational causes, Emily has also placed a great significance on women's health advocacy and disease research. Emily is happy to award this scholarship to such deserving young women who have proven themselves as strong students with bright futures ahead.



COLIBRI LOPEZ-MUNOZ

.....

Convent of the Visitation
University of St. Thomas

Robert and Ardis James Foundation SCHOLARS

DONOR PARTNER SINCE 2017
SCHOLARS SUPPORTED: 20

.....

The Robert and Ardis James Foundation is a private foundation established in 1986 by Robert and Ardis James to focus on a broad range of charitable causes primarily in education and the arts. Both Bob and Ardis recognize that they were extremely fortunate in their lives together and that they have a responsibility to share their good fortune with others. The Trustees of the James Foundation are delighted to support scholars through Wallin Education Partners and believe that providing young people with educational access will allow them to realize their potential as students and as adults.



BARAA AL-JASIM

.....

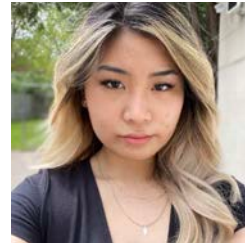
Blaine High School
University of Minnesota - Twin Cities



HAFSA HASSAN

.....

North St. Paul High School
Augsburg University



KHANH TRAN

.....

Roosevelt High School
University of Minnesota - Twin Cities



LUE XIONG

.....

Johnson High School
University of Minnesota - Twin Cities

Ruth and Raymond Reister SCHOLAR

DONOR PARTNER SINCE 2018
SCHOLARS SUPPORTED: 4

.....

The Ruth A. and Raymond A. Reister Charitable Trust was established by Ruth Reister at the time of her death. Both Ruth and Ray were lawyers and held a strong belief in the value of education both for the benefit of the individual and for its importance to a free, democratic society. Ray practiced law with a major law firm in the Twin Cities and devoted a great deal of time and effort to local charitable causes. Ruth entered the legal profession at a time when it was rare for a woman to pursue a legal career. She became a champion for women in the legal profession and supported a number of educational and charitable causes. Although the Reisters did not have a family, they often provided financial support for young people to attend college. The Reister Charitable Trust is continuing the Reisters commitment to providing financial support to enable others to achieve a college education by supporting a scholar through Wallin Education Partners.



DOUA CHEE LEE

.....

Columbia Heights High School
University of Minnesota - Twin Cities

Schulze Family Foundation SCHOLARS

DONOR PARTNER SINCE 2010
SCHOLARS SUPPORTED: 23

.....

Dick Schulze is the founder and chairman emeritus of Best Buy Inc., the world's largest consumer electronics retailer. He is also the founder and Chairman of the Richard M. Schulze Family Foundation (RMSFF). Mr. Schulze believes education is integral to an individual's ability to thrive and build a successful life. It is also integral to a community's health and vitality. RMSFF conducts and funds a number of scholarship programs, ranging from assistance to families seeking high-quality early learning experiences for their preschoolers to programs that prepare teachers to restore American education to a place of prominence among its international peers.

Although Mr. Schulze never attended college due to service in the U.S. military during the Vietnam War, he has invested millions of dollars attempting to provide that advantage to the youth of this generation. His belief is that their odds of success, and society's, will be greatly improved as a result.



KEIJUAN WHITE

.....

DeLaSalle High School
University of Minnesota - Twin Cities



ROBEL ZEWDIE

.....

DeLaSalle High School
University of Minnesota - Twin Cities

Sit Investment SCHOLAR

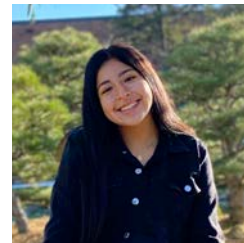


DONOR PARTNER SINCE 2014
SCHOLARS SUPPORTED: 4

.....

Sit Investment Associates established the Sit Investment Associates Foundation in 1984 to support organizations involved with human services, hunger, education, health care, the arts and culture, international affairs, and our military veterans. Sit Investment Associates, one of the largest minority-owned asset management firms in the United States, was founded in 1981 by Eugene C. Sit. With only four senior management professionals, a small support staff, and \$1 million in working capital, the firm’s assets under management reached \$1 billion in just three years—an achievement due to solid returns on investment, strong ethical practices, and treasured client relationships. The company now manages assets totaling \$13 billion for institutional and individual investors, providing quality investment management expertise in domestic and international growth equities and fixed income. The Sit Investment Associates Foundation is proud

to promote the mission of Wallin Education Partners to enable college and career success for high-potential Minnesota students with financial need through facilitating scholarships and providing comprehensive advising support.



KAYLA PACHECO

.....

Roosevelt High School
University of Minnesota - Twin Cities

SPS Commerce SCHOLAR

DONOR PARTNER SINCE 2021
SCHOLARS SUPPORTED: 1

.....

SPS Commerce is committed to taking action to address educational inequity in Minnesota and accelerate change in our communities. We are proud to support our inaugural scholar pursuing a career in technology in achieving their educational and career goals through the SPS Commerce Diverse Scholar Program. In addition to receiving funding to support their education, our SPS Commerce Scholar will participate in our internship program, have access to mentors, and be connected to a wide range of business professionals.

SPS Commerce is the world's leading retail network, connecting trading partners around the globe to optimize supply chain operations for all retail partners. We support data-driven partnerships with innovative cloud technology, customer-obsessed service, and accessible experts so our customers can focus on what they do best. To date, more than 95,000 companies in retail, distribution, grocery, and

e-commerce have chosen SPS as their retail network. SPS has achieved 80 consecutive quarters of revenue growth and is headquartered in Minneapolis.



SALAAM DAY

.....

Washburn High School
Augsburg University

Star of the North SCHOLARS

Star of the North scholars are funded from the general operating income of Wallin Education Partners, which comes from unrestricted gifts of alumni, trustees, staff, foundations, corporations, and individuals committed to helping advance the mission of Wallin Education Partners. The Star of the North Scholarship also celebrates the dedication of Wallin Education Partners staff, Alumni Association, and Trustees whose commitment to excellence and opportunity will be reflected in the lives and future contributions of these Star of the North scholars.



DANIEL BORBONIO

.....

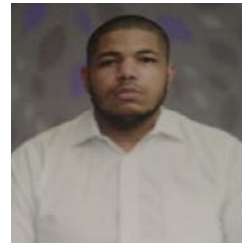
Holy Family Catholic High School
University of St. Thomas



KAUTHAR AL-KHIQANY

.....

Coon Rapids High School
University of Minnesota - Rochester



CHAVEZ BRONSON

.....

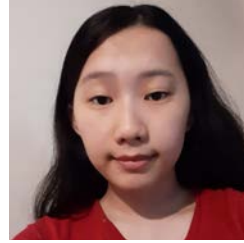
Hiawatha Collegiate High School
Xavier University of Louisiana



WILHELMINA DONALD

.....

Blaine High School
University of Minnesota - Duluth



SEE HER

.....

Hmong College Prep Academy
Augsburg University



POR GE HER

.....

Harding High School
St. Cloud State University



LAY CHRI HTOO

.....

Humboldt High School
St. Cloud State University

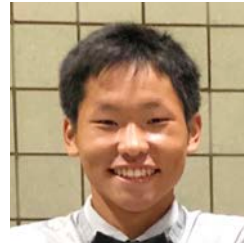
Star of the North SCHOLARS



MYA MCDOWELL

.....

Brooklyn Center High School
Augsburg University



NOU THAO

.....

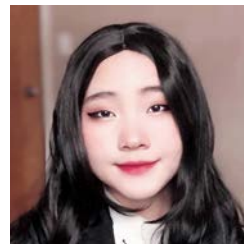
Harding High School
University of Minnesota - Rochester



KYAW MYINT OO

.....

Como Park High School
Hamline University



PA ZONG THAO

.....

Johnson High School
University of Minnesota - Twin Cities

Thies Family SCHOLARS

DONOR PARTNER SINCE 2021
SCHOLARS SUPPORTED: 3



I am new to the Wallin Scholarship program. I am also thrilled to be a part of it. My scholarships are limited to DeLaSalle High School graduates. It gives me an opportunity to give worthy students a little boost with the sometimes overpowering expense of college. I am grateful to Wallin Education Partners for its help in the selection of the students and their never-failing follow-up with each of their scholars.

- David Thies



JAZMINE ESTRADA GOMEZ



DeLaSalle High School
University of Minnesota - Twin Cities



SAVANNAH JOHNSON



DeLaSalle High School
Hamline University



SHERLY ORELLANA



DeLaSalle High School
Hamline University

Think IT Young Professional SCHOLARS

DONOR PARTNER SINCE 2015
SCHOLARS SUPPORTED: 31

.....



Think IT is a professional development association offered by York Solutions for IT professionals that brings a diverse set of minds together to discuss common technology challenges across industries. The overall mission of Think IT is to foster professional growth and development through the power of networking and collaboration. Most groups meet monthly

in an informal, roundtable format with a different member from the group facilitating each session. Through the Think IT Association, members also can participate in our other programs. Being a member of Think IT allows them to be involved in the Link to Leadership and the Amazing Leadership Programs. These are leadership development programs that directly benefit Genesys Works, a community partner of Wallin Education Partners.

Scholarships through Wallin Education Partners are awarded to Genesys Works students pursuing degrees in the IT field.



MOUHIYADIN IBRAHIM

.....

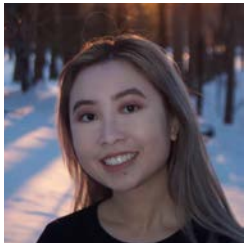
Augsburg University



JENNIFER LEE

.....

University of Minnesota - Twin Cities



KAREN VUONG

.....

University of St. Thomas



Mouhiyadin Ibrahim

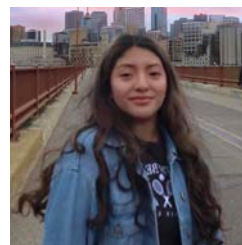
Think IT Young Professional Scholar

THS SCHOLAR

DONOR PARTNER SINCE 2021
SCHOLARS SUPPORTED: 1

.....

The THS Scholarship is being established this year. Through the example of our parents, who are long-time supporters of Wallin Education Partners, we have seen how rewarding it is to help a student meet the financial needs required to attend college. We are excited to participate with Wallin Education Partners to make postsecondary education more accessible to students from diverse backgrounds. It's an honor to help a bright, accomplished high school graduate and first-generation college student pursue their dreams.



MARIA HERNANDEZ PEREZ

.....

Hiawatha Collegiate High School
University of Minnesota - Twin Cities

Toles Family SCHOLAR

DONOR PARTNER SINCE 2021
SCHOLARS SUPPORTED: 1

.....

There is just one thing no one can take away from you: your education. Moreover, our democracy needs an educated, engaged public to be healthy. We are honored to support a Wallin Scholar who is attending college after graduating from the Flaherty Family Foundation program. We stand behind you and are continually rooting for your success.



OLIVIA MERTES

.....

Hill-Murray School
Iowa State University



True North SCHOLAR

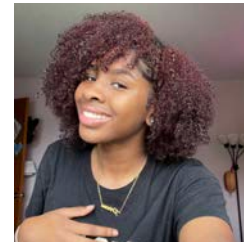
DONOR PARTNER SINCE 2016
SCHOLARS SUPPORTED: 5



My parents believed strongly in education and their expectation framed my school years, influencing my own commitment to “learning for life.” I was fortunate to have the opportunity to attend kindergarten through graduate school. The True North Scholarship will grant a student an opportunity to higher education and its lifelong benefits. Education will always be with you as a lifelong guide. Education opens doors for economic benefit, generates curiosity, inspires ideas, and

develops understanding. Education expands your worldview and your relationship to the world.

You were selected as a True North Scholar because of your intelligence, resilience, determination, and dedication to learning and improving yourself and the life of your family. You are breaking new ground and redefining expectations which takes tremendous strength and courage. Helping a student access a college education has always been my dream. Thank you for helping me fulfill my dream. May this scholarship help you find the path to your True North.



AMAEA BROWN



North Community High School
Augsburg University

U.S. Bank SCHOLARS



DONOR PARTNER SINCE 2015
SCHOLARS SUPPORTED: 55

.....

At U.S. Bank, our Corporate Social Responsibility work is built on a foundation of ethics, integrity, and trust and highlights our commitment to economic development in the communities we serve. Our commitment to CSR comes to life through Community Possible, our corporate giving and engagement platform that closes the gap between people and possibility in the areas of Work, Home, and Play.

We know that a flourishing small business environment and an educated workforce contribute to strong communities. That's

why we invest in and support programs and organizations that help small businesses thrive, provide pathways to higher education, help people succeed in the workforce, and gain greater financial literacy.

Our employees affect real change. We commit to one another, our communities, and our company, empowered to do good through time off to volunteer, channels for sharing our innovative ideas, programs that help us chart our careers and meet mentors, and much more.

We are committed to ethics and quality, and we know that developing communities means investing in people and financial futures. We are proud to support Wallin Education Partners and help high achieving, diverse students in the Twin Cities dream big, and strengthen their financial futures.

In our U.S. Bank spirit of actively developing, strengthening, and energizing the communities where we live and work, we hope all Wallin Education Partners Scholars embrace the vast educational opportunities that are in front of them, reach out to mentors who will guide them in their educational pursuits and, most importantly, use their college experiences to improve the lives of others.

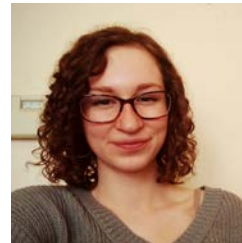
We are proud to work alongside Wallin Education Partners Scholars at U.S. Bank and support them in beginning a meaningful career.



TRISTIN KHANG

.....

Brooklyn Center High School
Augsburg University



CRISTINA LUMPPIO

.....

Brooklyn Center High School
University of Northwestern - St. Paul

U.S. Bank SCHOLARS



KATHLEEN MASON

.....

DeLaSalle High School
Hamline University



AURIEL PATTON

.....

Hopkins High School
Florida Agricultural and
Mechanical University



TROPHINA MENTOE

.....

Robbinsdale Cooper High School
North Carolina A&T State University



Wallin Foundation SCHOLARS



DONOR PARTNER SINCE 1992
SCHOLARS SUPPORTED: 2794

.....

Founded in 1992, Winston (Win) and Maxine Wallin initially started funding four-year college scholarships at Minneapolis South High School, Mr. Wallin's alma mater. They expanded the Program to all Minneapolis public high schools in 2000. St. Paul public schools were included in 2006, with Anoka-Hennepin high schools next in 2007. Over the years, other very generous Donor Partners have joined the Education Partners to offer their own named scholarships. The Program has grown significantly in recent years, with the Wallin Education Partners (WEP) now helping support students at 69 high schools. The

intention of the Program is to educate young people in our community who are hard-working and ambitious and in search of better futures. The extremely high graduation rates of the Program (above 90 percent) are what sets WEP apart. To date, thousands of our students have gone on to lead successful lives after achieving their college degrees.

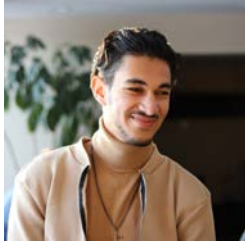
Both Win and Maxine benefited from college scholarships themselves. Win grew up in South Minneapolis and went onto a successful business career at both Pillsbury and

Medtronic. Maxine is from Duluth and was able to attend both Macalester and the University of Minnesota (eventually becoming a librarian). They both believe strongly in the power of education to change lives for the better. They are both honored to be in the enviable position (and Mr. Wallin would say lucky enough) to be able to give back to the community and offer these scholarships and related student support services.

Although Mr. Wallin passed away in December 2010, the legacy he and his wife established long ago continues. Maxine Wallin and her family are pleased to offer you the opportunity to become a new member of this scholarship program family. Wallin Scholars have gone forth to excel in their undergraduate and graduate studies and to become strong contributing members (and leaders) in our society. We look forward to celebrating your accomplishments with you as you begin your college experience. We have “Great Expectations” for you on this journey. Congratulations on your award.



Wallin Foundation SCHOLARS



YOUSSEF ABDALLAH

.....

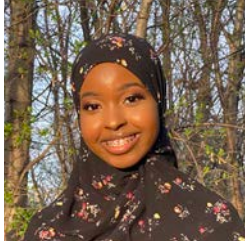
Roseville Area High School
Bethel University



MOYINOLUWA ABIODUN

.....

Brooklyn Center High School
Augsburg University



AASIA ABDIWAHAB

.....

Ubah Medical Academy
University of Minnesota - Twin Cities



SARA ABUSAIF

.....

Blaine High School
St. Catherine's University



IKRAM ABDULKADIR

.....

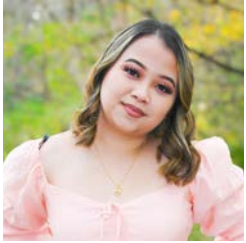
Champlin Park High School
University of Minnesota - Twin Cities



DAVID AYENI

.....

Anoka High School
University of St. Thomas



ELTAW BWELL

.....

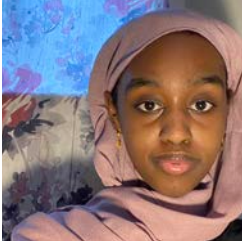
Washington Technology Magnet School
Hamline University



KAREN FAHIM

.....

Mounds View High School
University of Minnesota - Twin Cities



FOWSIA DAHIR

.....

Edison High School
University of Minnesota - Twin Cities



NICOLAS FOX

.....

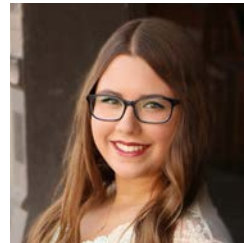
Andover High School
University of Wisconsin - Madison



SHADIA ESSA

.....

Southwest High School
St. Catherine's University



MARIAH GUENTHER

.....

Andover High School
Concordia University - St. Paul

Wallin Foundation SCHOLARS



SUPHARAT HANG

.....

Harding High School
University of Minnesota - Twin Cities



REESE IRELAND

.....

Coon Rapids High School
University of Minnesota - Twin Cities



JESUS HERRERA

.....

FAIR School
Dunwoody College of Technology



JIBRIL JAMA

.....

South High School
University of Minnesota - Twin Cities



DANNY HO

.....

Como Park High School
Augsburg University



JAMMA JIGGO

.....

Anoka High School
Augsburg University



Wallin Foundation SCHOLARS



THOMAS KELLY

.....

Andover High School
University of Wisconsin - Madison



SUREE LOR

.....

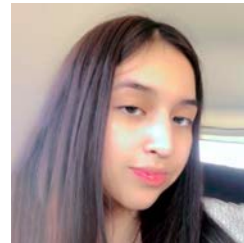
Community of Peace Academy
Saint John's University



DER LEE

.....

Washington Technology Magnet School
University of Minnesota - Twin Cities



ANA LUNA CABRERA

.....

Hiawatha Collegiate High School
University of Minnesota - Twin Cities



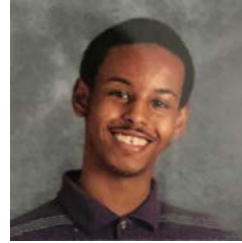
Wallin Foundation SCHOLARS



JENNIFER MACARIO

.....

Cristo Rey Jesuit High School
University of Minnesota - Twin Cities



HARUN MOUSA

.....

Bloomington Jefferson High School
University of Minnesota - Twin Cities



TEALA MATTHEWS

.....

Mounds View High School
University of Minnesota - Twin Cities



HAVY NGUYEN

.....

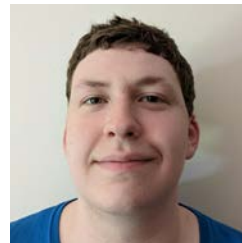
Creative Arts Secondary School
University of Minnesota - Twin Cities



JAMAD MOHAMUD

.....

South High School
University of Minnesota - Twin Cities



CONNOR NICOLAY

.....

Saint Agnes School
Concordia University - St. Paul



ASHLEY OLANDA OLIVA

.....

Bloomington Kennedy High School
Augsburg University



TAIA OLSEN

.....

Andover High School
University of Minnesota - Twin Cities



JEREMY OLEA-HERRERA

.....

Bloomington Kennedy High School
University of Minnesota - Twin Cities



MIKE OMALANGA

.....

St. Louis Park High School
University of St. Thomas



JACQUELINE OLEA ROSSANO

.....

Richfield High School
University of Minnesota - Rochester



MANDEQ OMAR

.....

South High School
University of Minnesota - Twin Cities

Wallin Foundation SCHOLARS



MARIA PANORA

.....

Robbinsdale Cooper High School
St. Olaf College



EMMA SCHREPFER

.....

Andover High School
College of Saint Benedict



STEPHANY PAREDES

.....

Hiawatha Collegiate High School
St. Olaf College



HANNAH SINOUTHASY

.....

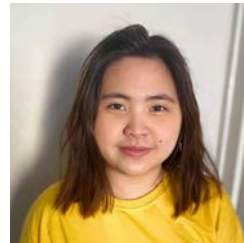
Champlin Park High School
University of Minnesota - Twin Cities



JOSLYN REUTER

.....

Burnsville High School
South Dakota State University



EHPAW SO

.....

Washington Technology Magnet School
Hamline University



AMIR SUBHAN

.....

Anoka High School
University of Minnesota - Twin Cities



MILWG THAO

.....

Patrick Henry High School
Minneapolis College of Art and Design



SALLY TRUONG

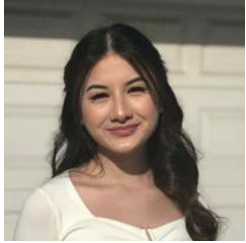
.....

Coon Rapids High School
University of Minnesota - Twin Cities



Hannah Sinouthasy
Wallin Foundation Scholar

Wallin Foundation SCHOLARS



MAI CHUE VANG

.....

Washington Technology Magnet School
St. Catherine University



JULIE VUE

.....

Coon Rapids High School
University of Minnesota - Rochester



MALEE VANG

.....

Patrick Henry High School
University of Minnesota - Twin Cities



JOSSLYN WARNEKE

.....

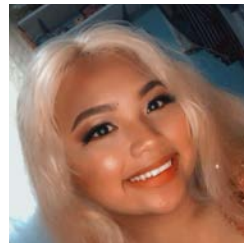
Andover High School
Bethel University



JONATHAN VU

.....

Chesterton Academy
University of Minnesota - Twin Cities



YONG CHENG YANG

.....

Park Center High School
University of Wisconsin - Madison



WCA Foundation SCHOLAR

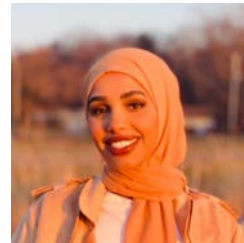
DONOR PARTNER SINCE 2021
SCHOLARS SUPPORTED: 1

.....

Founded in 1866, the WCA Foundation was the first benevolent nonprofit organization in Minnesota. WCA is run by 50 volunteer members, all women.

- **We believe** that when women are secure, entire communities are stronger.
- **We believe** that in the grantmaking process, the needs of the community and grantees prevail.
- **We believe** that focusing on our work will increase our impact in the community.
- **We believe** in a world where structures and systems are equitable.

We are pleased to support the education of a female student through Wallin Education Partners.



MUMTAZ AHMED

.....

Roosevelt High School
St. Catherine University

Well-Being of All Foundation SCHOLAR

DONOR PARTNER SINCE 2018
SCHOLARS SUPPORTED: 4



Kathleen Blatz and Greg Page are honored to be donor partners with Wallin Education Partners. Greg and Kathleen have supported students and education in the Twin Cities and beyond for over 30 years. Kathleen and Greg are committed to giving back to this community and creating a strong workforce within it. They hope to provide valuable educational opportunities to as many young people as possible. Kathleen and Greg want to see students from all socioeconomic backgrounds be successful in their lives and find sustainable and fulfilling careers. They have confidence that Wallin Education Partners will help to make this happen for the students whom they provide scholarships and mentorship.



MARBELLA ARELLANO PEDROZA



Brooklyn Center High School
University of Minnesota - Twin Cities



Thank You

