



We are more than a scholarship.
We are a college-completion program for high-potential students with financial need.

SEE OUR IMPACT 

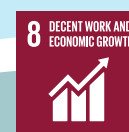
United Nations Sustainable Development Goals addressed with this program:



1.4



4.3, 4.5



8.6



10.1

THE SOCIAL IMPACT OF WALLIN EDUCATION PARTNERS

This impact value map shows the average cost per scholar and the estimated lifetime benefits generated from becoming a Wallin Scholar (in present value, 2020 \$) as compared to a student with similar characteristics.

\$311 million

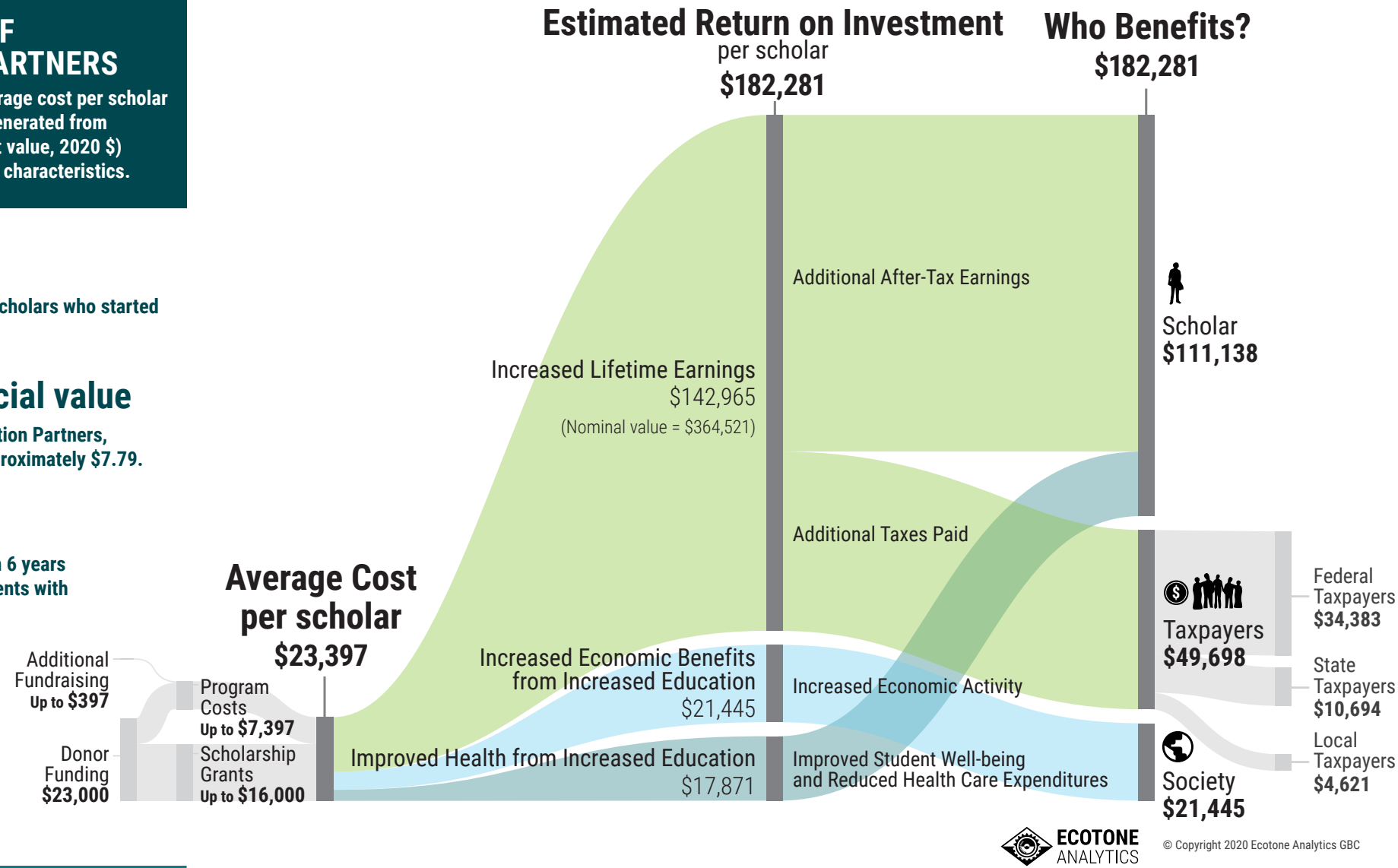
Total projected social returns for all scholars who started college between 2010-2019

\$1 → \$7.79 in social value

For every \$1 invested in Wallin Education Partners, the social return on investment is approximately \$7.79.

57% graduation lift

Increase in likelihood of graduating in 6 years for Wallin Scholars versus other students with similar characteristics



Wallin Education Partners' FIVE DIMENSIONS OF IMPACT



- WHAT:** A college completion program that combines financial aid with individual advising to help them obtain college degrees.
- WHO:** Low income students from 56 high schools in the Twin Cities and surrounding regions.
- HOW MUCH:** There are over 1,000 active Wallin Scholars and nearly 5,000 alumni of the program.
- CONTRIBUTION:** Evidence-based impacts project that there is a 679% return for every dollar contributed to Wallin Educational Partners. Approximately 60% of the benefits accrue directly to the scholar.
- IMPACT RISK MITIGATION:** Wallin provides scholarship and advising support to students who most benefit. Wallin's array of partnerships and donor engagement promote growth and sustainability.

LOGIC MODEL

INPUTS	ACTIVITIES	OUTPUTS	SHORT TERM OUTCOMES	INTERMEDIATE OUTCOMES	LONG TERM OUTCOMES	IMPACTS
<ul style="list-style-type: none"> Advisors and Scholar Advisor Curriculum Administration, Management, Fundraising and Marketing Corporate, Foundation, and Individual Donors' Dollars Corporate, Education, and Non-profit Partnerships 	<ul style="list-style-type: none"> Student Recruitment and Selection Scholar Programming Scholarship Disbursement Tailored Advising Support Scholar Connect Scholarship Disbursement Donor Matching, Relationship Building, and Engagement Alumni Activities 	<ul style="list-style-type: none"> Number of Scholars in 4-Year Program Number of First Generation Scholars and Scholars of Color 4-8 Advisory Meetings per Student each Year Amount of Scholarship Funds Disbursed Number of Donors Participating 5,000+ Alumni 	<ul style="list-style-type: none"> Reduced Student Loans Reduced Financial Stress Increased Sense of Support Increased Academic Well-being Increased Academic Persistence Increased Access to Professional Networks 	<ul style="list-style-type: none"> Increased Graduation Rates Reduced Debt Burden Increased Professional Networks Increased Employability and Professional Skills 	<ul style="list-style-type: none"> Increased Earnings Increased Employment Increased Economic Activity Increased Health Increased Educational Attainment Increased Volunteering and Charitable Giving 	<ul style="list-style-type: none"> Increased Equity Degree Parity Increased Economic Mobility Reduced Intergenerational Poverty More Diverse Workforce in Minnesota
Average Cost per Scholar: \$23,397			Estimated Return on Investment per Scholar: \$182,281			

KEY PERFORMANCE INDICATORS (KPIs)	Current
Program Alumni	5000+
Current Scholars	1000
Students of Color	83%
1st Generation Students	72%

Students from low-income households:	100%
6 Year Graduation Rate:	91%
Students graduating without debt:	39%
Students employed 6 months after graduation:	95%

STATEMENT FROM WALLIN EDUCATION PARTNERS

Wallin Education Partners strives to make college a reality for low income students in Minnesota. Founded in 1992, Wallin provides scholarships and robust individual support for students who face economic, cultural and societal barriers to success. The program is grounded in the belief that education can transform lives, create employment opportunities that contribute to a healthy economy, and impact racial and economic disparities in our society. With a singular focus on student success, the program is regarded as one of the most successful college completion scholarships in the country with a six-year graduation rate for students enrolled in a four-year college of 90% or higher. Wallin's model depends on collaborative relationships with businesses who hired our graduates, and foundation, corporate, and individual donors who believe in education and the possibility of equal opportunity for all citizens.



Education can transform lives.

TESTIMONIALS



"Wallin EP has been a significant support, not just for me, but for my brother and sister as well. We are deeply grateful to be Wallin Education Partners Scholars. The scholarship allowed us to pursue our college degrees without worrying about the financial burden."

RA'WI MAHAMUD, Wallin Education Partners Scholar

"We were interested in setting up a scholarship program to help under-represented students. With Wallin Education Partners, we are able to have a much greater impact than if we tried to do this on our own. They administer the Holman Scholarships, and as a result, we have leveraged the power of a collective history of investment in student success."

TOM HOLMAN, Donor Partner

"Giving back to Wallin EP is something I want to do because it's not just me who benefited from this program. I have two brothers currently in college who are also Wallin EP scholars. I was the first to go to college in my family, so when it was the time for my brothers to apply to college, I told them about Wallin right away. I knew that my brothers would benefit not just from the financial help, but also from having advisors and other support along the way. I would always be there for my brothers, but I felt like I couldn't be as helpful to them as having a Wallin advisor would be."

PA NHIA KHANG, Wallin Education Partners Alumni Board

"The impact of Wallin Education Partners has opened another door of opportunities for me to keep succeeding in life. It not only provides financial support, but other important support services that could turn into lifelong connections."

LILY YANG, Wallin Education Partners Scholar



Disclaimer: This assessment addresses the impact measurement and management systems, practices, and metrics employed by the impact assessment consultants. It does not address financial performance and is not a recommendation to invest. Each investor must evaluate whether a contemplated investment meets the investor's specific goals and risk tolerance. Ecotone Analytics GBC (Ecotone), its staff, and Ecotone analysts are not liable for any decisions made by any recipient of this assessment.

This assessment relies on the written and oral information provided by the analyst at the time of the Ecotone analysis. Under no circumstances will Ecotone, its staff, or the Ecotone analysts have any liability to any person or entity for any loss of damage in whole or in part caused by, resulting from, or relating to any error (negligent or otherwise) or other circumstances related to this assessment. The accompanying technical document is an integral part of this Impact Assessment.

Prepared by Ecotone Analytics. Visit ecotone-partners.com

Impact Management Project: Creative Commons Attribution-NoDerivatives and UN SDGs un.org/sustainabledevelopment

